

# Rhino® SD3/XD3 Bleeder/Ball Valve



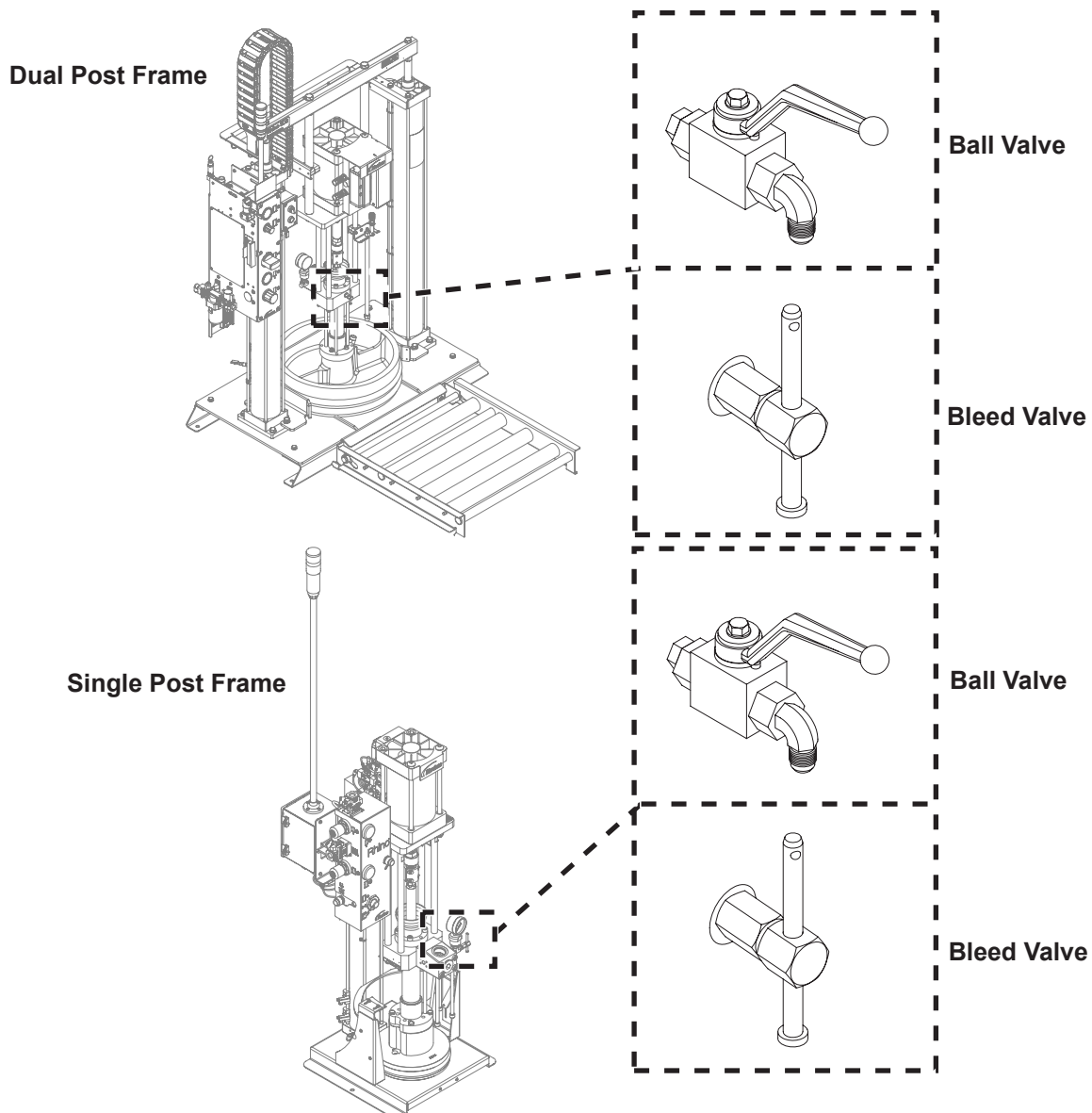
**WARNING:** Allow only qualified personnel to perform the following tasks. Follow the safety instructions in this document and all other related documentation.

## Description

See Figure 1.

The Rhino bleeder/ball valve is used to relieve material pressure and purge air from the system during pump priming. The valve is located on the hydraulic section near the material outlet.

**NOTE:** Do not open the bleeder valve (if equipped) more than three turns. The bleeder valve and material may be forced from the valve body.



10018522  
10016501

Figure 1 Bleeder/Ball Valve Location

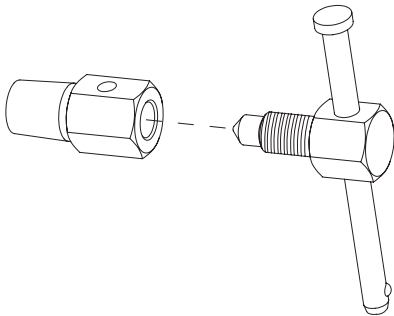
Parts

To order parts, call the Nordson Industrial Coating Systems Customer Support Center at (800) 433-9319 or contact your local Nordson representative.

Bleeder Valve Kits Single Post Frames

See Figure 2 and refer to the following parts list.

**NOTE:** The bleeder valve kits include the pin, poppet screw, and bleeder valve body.



10016639

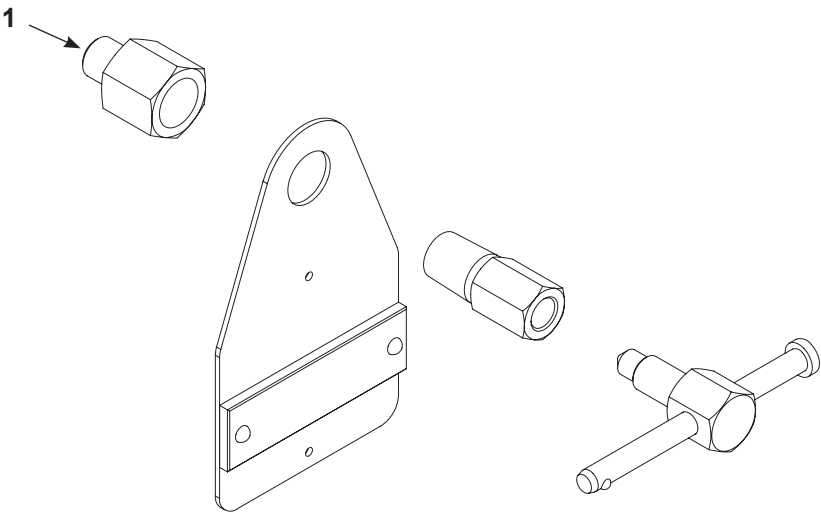
Figure 2 Bleeder Valve

Part	Part	Description
-----	—	MODULE, bleeder, Rhino, carbon steel
1611758	—	• KIT, Rhino, bleeder assembly, carbon steel
—	-----	MODULE, bleeder, Rhino, stainless steel
—	1611759	• KIT, Rhino, bleeder assembly, stainless steel
900344	900344	LUBRICANT, Never-Seez®

Bleeder Valve Kits Dual Post Frames

See Figure 3 and refer to the following parts list.

**NOTE:** The bleeder valve kits include the pin, poppet screw, and bleeder valve body.



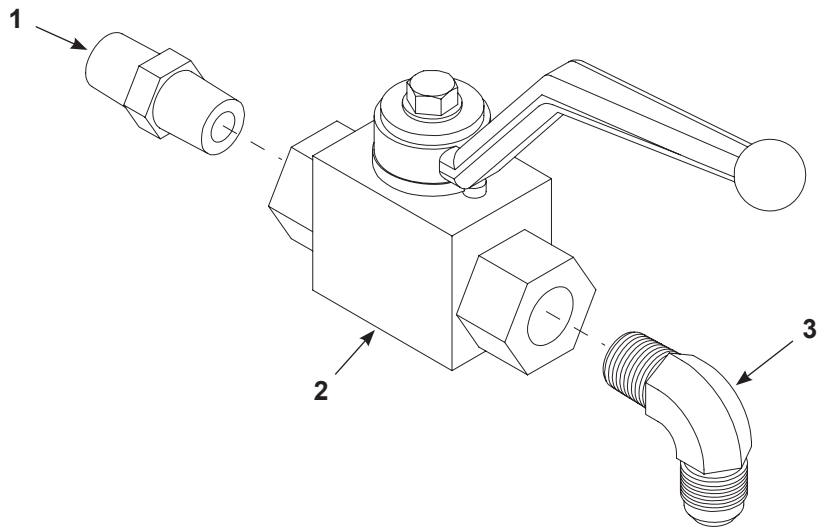
10019365

Figure 3 Bleeder Valve, Front

	Part	Part	Description
—	-----	—	MODULE, bleeder, Rhino, carbon steel, front
—	1611758	—	• KIT, Rhino, bleeder assembly, carbon steel
—	—	-----	MODULE, bleeder, Rhino, stainless steel, front
—	—	1611759	• KIT, Rhino, bleeder assembly, stainless steel
1	1042489	1042489	ADAPTER, straight thread, 7/16-20 x 1/4 NPT, Viton
—	900344	900344	LUBRICANT, Never-Seez®

Ball Valve Kits Single Post Frames

See Figure 4 and refer to the following parts list.



10019021

Figure 4 Ball Valve

Item	Part	Part	Description	Quantity	Note
—	-----	—	MODULE, ball valve, Rhino, carbon steel	—	
—	—	-----	MODULE, ball valve, Rhino, stainless steel	—	
1	973037	—	• NIPPLE, hex, ¼ x ¼ x 1.45, steel, zinc	1	
	—	1617468	• NIPPLE, hex, ¼ x ¼ x 1.45, stainless steel	1	
2	146496	—	• VALVE, ball, ¼ NPT, steel	1	
	—	1617469	• VALVE, ball, ¼ NPT, stainless steel	1	
3	972200	—	• ELL, male, 37. ⅝-18 x ¼, steel	1	
	—	972395	• ELL, male, 37. ⅝-18 x ¼, stainless steel	1	
NS	900481	900481	ADHESIVE, pipe/thread/hydraulic sealant (PST)	AR	
NS	972374	972374	CAP, tube, 37, ⅝-15, steel, zinc	AR	A

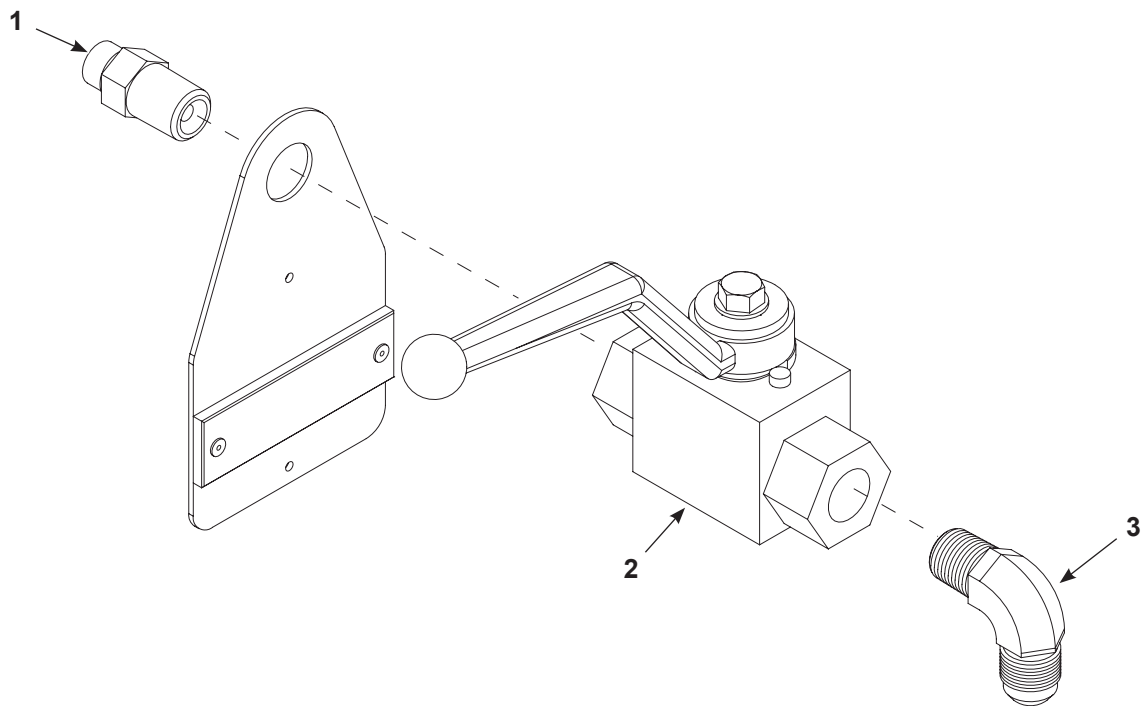
NOTE: A. Can be used to cap 972200/972395 for moisture cure materials.

NS: Not Shown

AR: As Required

Ball Valve Kits Dual Post Frames

See Figure 5 and refer to the following parts list.



1042459

Figure 5 Ball Valve, Front

Item	Part	Part	Description	Quantity	Note
—	-----	—	MODULE, ball valve, Rhino, carbon steel, front		
—	—	-----	MODULE, ball valve, Rhino , stainless steel, front		
1	1010570	—	• ADAPTER, ¼ SAE x ¼ NPT		
	—	322740	• ADAPTER, male, ¼ NPT x ¾ T, VITO		
2	146496	—	• VALVE, ball, ¼ NPT, steel		
	—	1617469	• VALVE, ball, ¼ NPT, stainless steel		
3	972200	972200	• ELL, male, 37. ⅝-18 x ¼, steel		
NS	900481	900481	ADHESIVE, pipe/thread/hydraulic sealant (PST)	AR	
NS	156289	156289	LUBRICANT, Mobil® SHC® 634, 30122-8	AR	
NS	972374	972374	CAP, tube, 37, ⅝-15, steel, zinc	AR	A

NOTE: A. Can be used to cap 972200 for moisture cure materials.

NS: Not Shown

AR: As Required

Issued 05/21

Original copyright date 2020. Rhino, Nordson, and the Nordson logo are registered trademarks of Nordson Corporation.

All other trademarks are the property of their respective owners.