

# Single/Dual Channel Profinet Adapter Installation

## Introduction

The single and dual channel Profinet adapter kits are used with Nordson PCI™ controllers to communicate with customer PLCs. The kits consist of a circuit board assembly, a grounding wrist strap, and these instructions.

**NOTE:** The illustrations show a dual channel Profinet adapter. The installation procedure is the same for both single and dual channel adapters.



**WARNING:** The Profinet adapter assembly and the PCI controller board are electrostatic-sensitive devices. Use the wrist strap included with the kit to ensure that you remain grounded while installing the Profinet adapter on the PCI board.

## Installation

1. Open the PCI controller enclosure, locate the PCI controller board, and remove the two screws and washers from the board standoffs shown in Figure 1. Save the screws and washers for reuse.

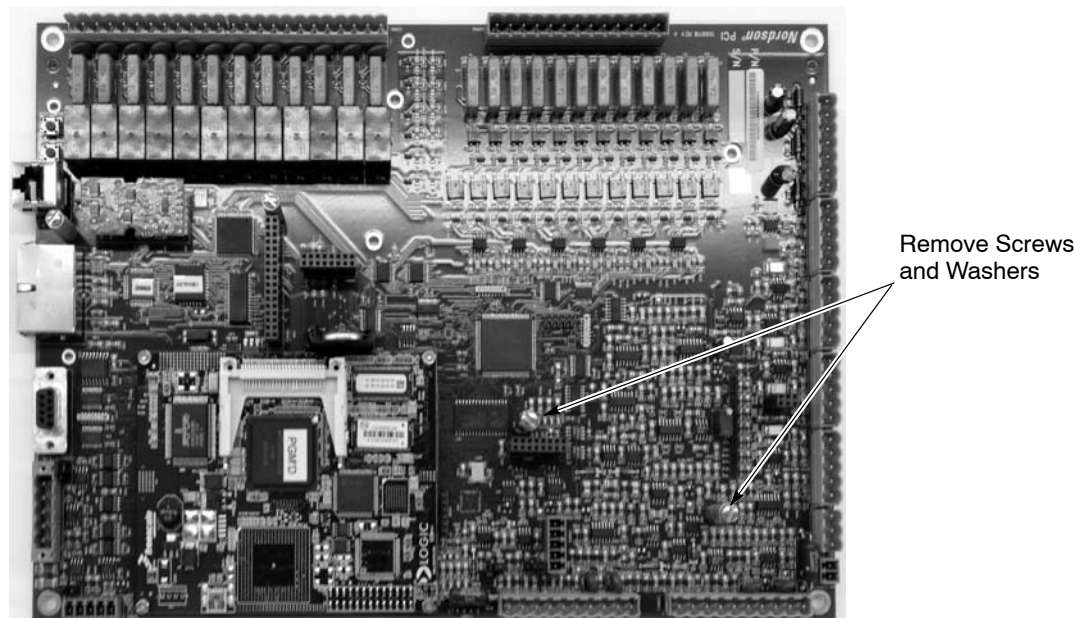


Figure 1 PCI Controller Board Preparation

2. Open the Profinet adapter kit and put on the grounding wrist strap.
3. Remove the Profinet adapter assembly from the anti-static bag and place it on an electrostatically safe, grounded surface.
4. Remove the screws and washers shown in Figure 2. Save the screws and washers for reuse.

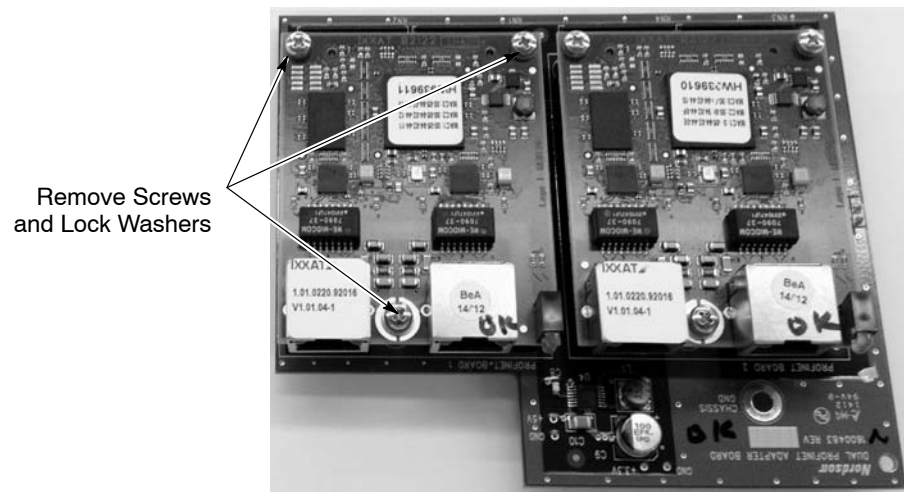


Figure 2 Profinet Adapter Assembly Preparation

5. Carefully remove the Profinet module from the adapter board. The module plugs into the board.

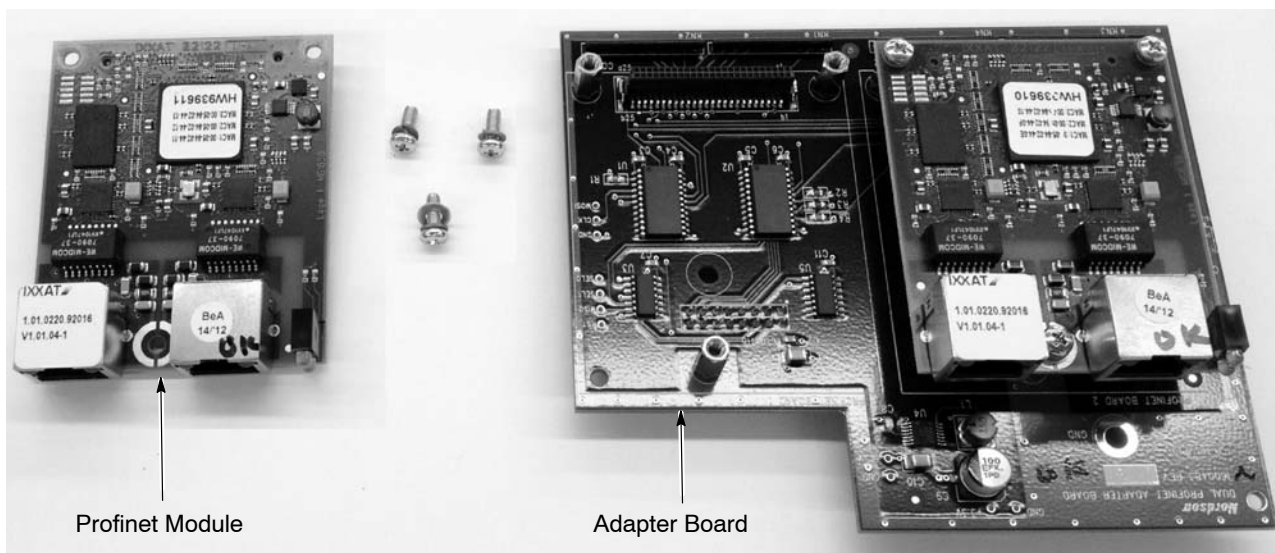


Figure 3 Removing Profinet Module from the Adapter Board

6. Plug the adapter board into Connectors 15 and 16 on the PCI board and line up the holes in the adapter board with the PCI board standoffs.

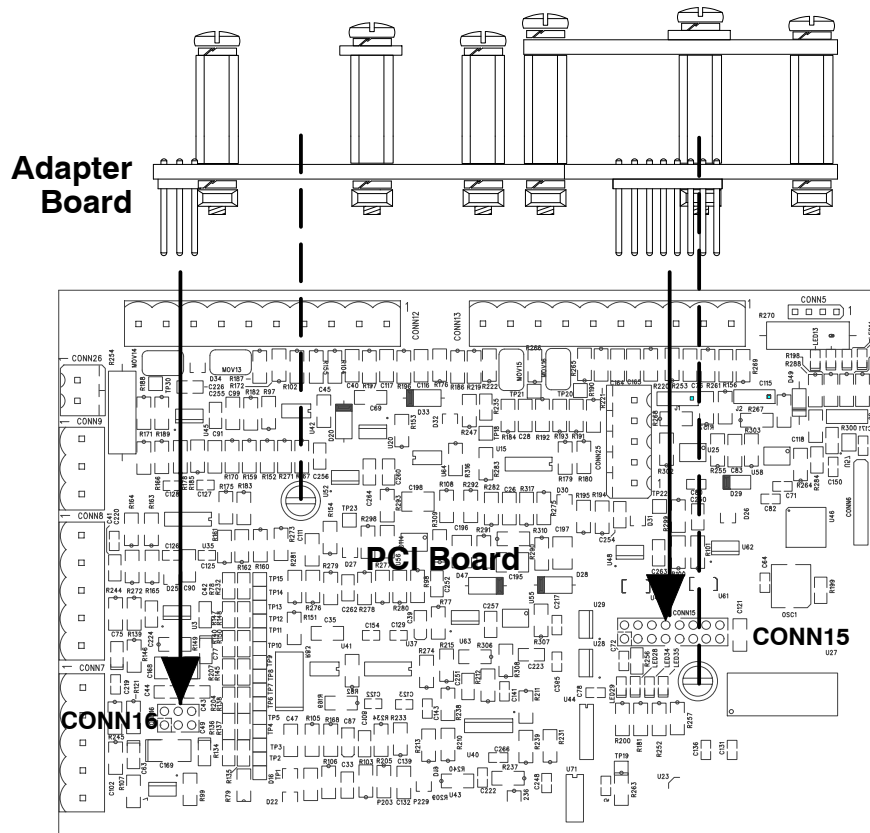


Figure 4 Plugging the Adapter Board into the PCI Board

7. Install the screws and lock washers removed in Step 1 through the adapter board and into the standoffs. Tighten carefully.

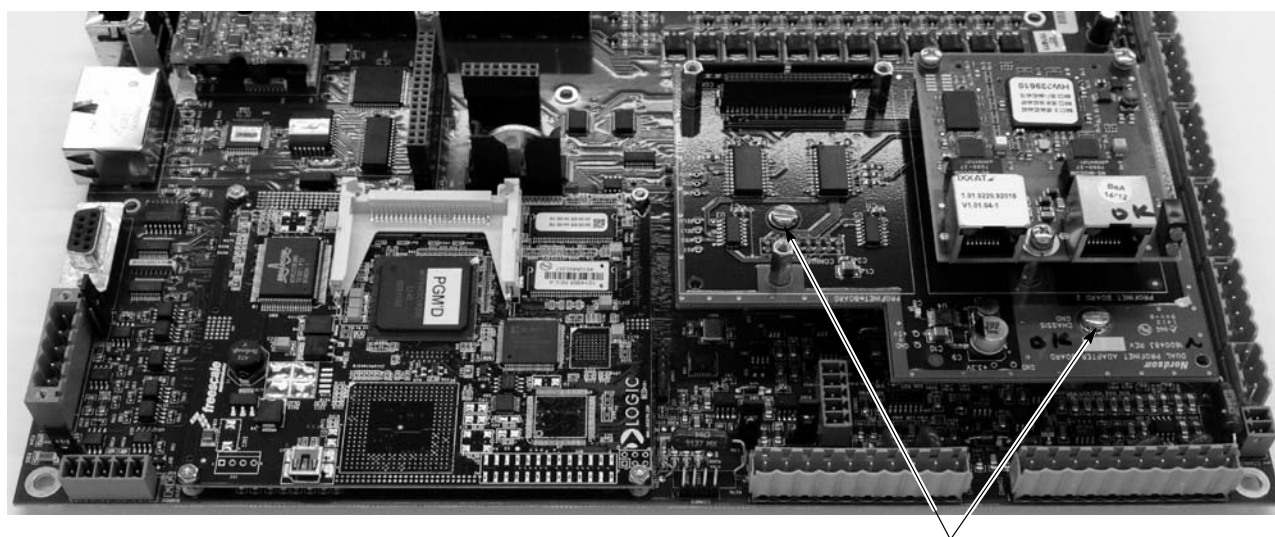


Figure 5 Plugging the Adapter Board into the PCI Board

8. Plug the Profinet module into the adapter board. Make sure the mounting holes on the module line up with the adapter board standoffs.
9. Install the screws and lock washers removed in Step 4 through the module and into the standoffs. Tighten carefully.

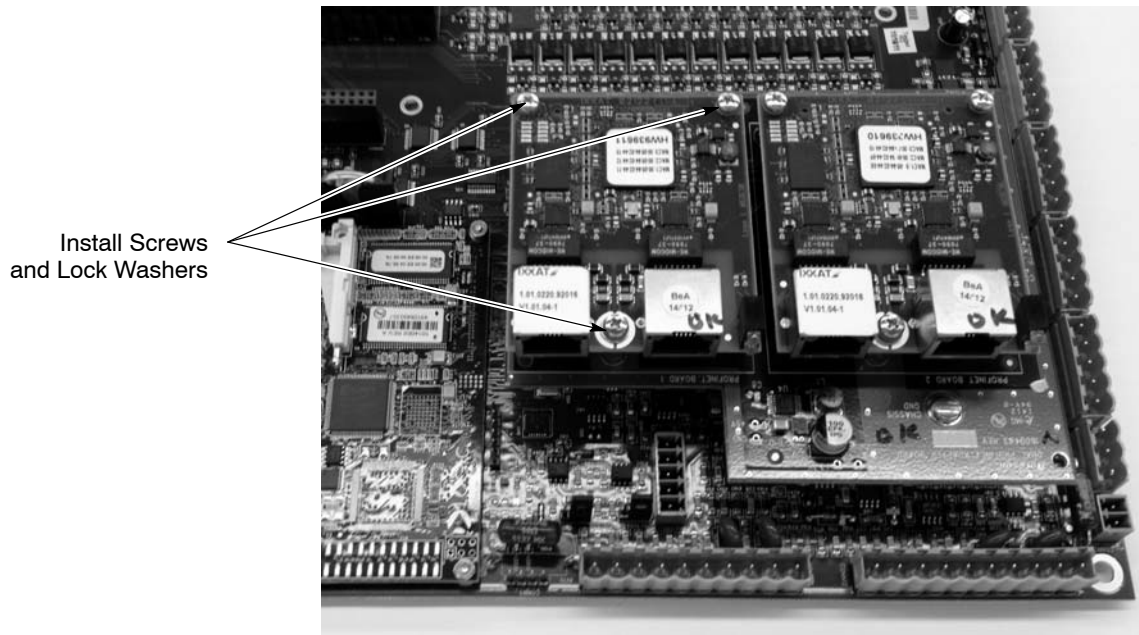


Figure 6 Installing the Profinet Module on the Adapter Board

## Profinet Node List

The Profinet Pump and Module nodes are programmed at the factory. The following table provides the programming parameters for troubleshooting and servicing.

Profinet Pump Nodes			
Module Location	Module Name	IP Address	Model
Pump Stand 1 Pump A Input	pump1ainput	192.168.0.3	6ES7 141-6BF00-0AB0 v7.0.0
Pump Stand 1 Pump A Output	pump1aoutputv7	192.168.0.2	6ES7 142-6BF00-0AB0 v7.0.0
Pump Stand 1 Pump B Input	pump1binput	192.168.0.5	6ES7 141-6BF00-0AB0 v7.0.0
Pump Stand 1 Pump B Output	pump1boutputv7	192.168.0.4	6ES7 142-6BF00-0AB0 v7.0.0
Pump Stand 2 Pump A Input	pump2ainput	192.168.0.7	6ES7 141-6BF00-0AB0 v7.0.0
Pump Stand 2 Pump A Output	pump2aoutputv7	192.168.0.6	6ES7 142-6BF00-0AB0 v7.0.0
Pump Stand 2 Pump B Input	pump2binput	192.168.0.9	6ES7 141-6BF00-0AB0 v7.0.0
Pump Stand 2 Pump B Output	pump2boutputv7	192.168.0.8	6ES7 142-6BF00-0AB0 v7.0.0

Profinet Modules			
Module Location	Module Name	IP Address	Model
PCI Board Gun 1	iemodule	192.168.0.5	V1.01.04-1
PCI Board Gun 2	iemodule2	192.168.0.6	V1.01.04-1

## Parts

Part	Description	Note
1601957	KIT, PCA, dual channel Profinet adapter	
1601958	KIT, PCA, single channel Profinet adapter	

Issued 8/12

Original copyright date 2012. Nordson and the Nordson logo are registered trademarks of Nordson Corporation.

PCI is a trademark of Nordson Corporation.

All other trademarks are the properties of their respective owners.