

Description

See Figure 1. The Rhino SD2/XD2 drum-centering shoes are designed to align a material drum with the bulk unloader follower (6).

Installation

Install the drum-centering shoes as shown in Figure 1. Tighten the screws (2) securely.

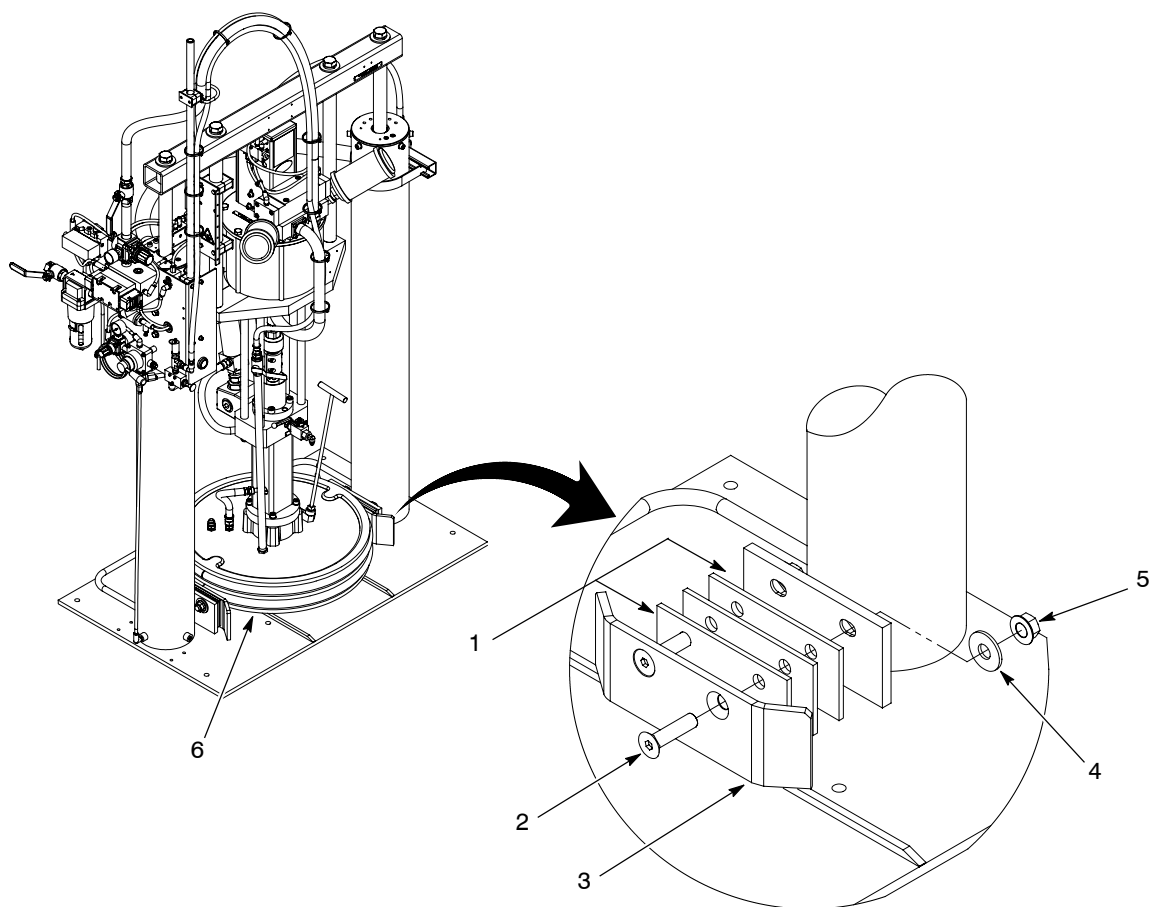


Figure 1 Drum-Centering Shoes

Parts

See Figure 1 and the following parts list.

Item	Part	Description	Qty
—	1077097	Module, centering shoes, 30- and 55- gallon drums	1
1	1076812	• Plate, centering, shoe, 55-gallon NAP	6
2	1077072	• Flat socket screw, $\frac{5}{8}$ -11 x $2\frac{1}{2}$	4
3	1076588	• Shoe, centering, 55-gallon NAP	2
4	345946	• Washer, flat, 0.656 x 2.25 x 0.16	4
5	1037239	• Nut, $\frac{5}{8}$ -11	4

Change Record

[illegible]

Issued 6/09

Original copyright date 2009. Nordson, the Nordson logo, and Rhino are registered trademarks of Nordson Corporation.
All other trademarks are the property of their respective owners.