

Description

See Figure 1. The Rhino SD2/XD2 Centering Pad module consists of two adjustable pads for aligning a pail to 280-, 286-, 305-, and 310-mm bulk unloader followers.

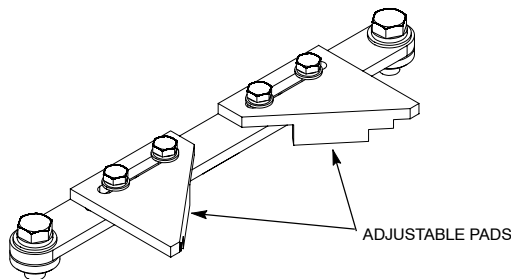


Figure 1 Pail Centering Pad Module

Installation



WARNING: Allow only qualified personnel to perform the following tasks. Follow the safety instructions in this document and all other related documentation.



CAUTION: To prevent damage to equipment, personnel performing this procedure must know how to safely operate the elevator control valve on the Rhino SD2/XD2 bulk unloader.

NOTE: This procedure requires a pail that is properly sized for the follower in use.

1. See Figure 2. Make sure that the centering pad screws (8) are installed into the proper holes for the applicable follower (6) in use.
2. Install the centering pad module (1) to the frame using the spacers (2), washers (3), lock washer (4), and screws (5). Tighten the screws securely.
3. Loosen the centering pad screws (8).
4. Set the pail (7) onto the frame. Using the bulk unloader elevator control valve, lower the follower (6) until the follower seal enters the pail (7).
5. Slide the centering pads (9) up against the pail (7). Tighten the centering pad screws (8) securely.
6. Using the bulk unloader elevator control valve, raise the follower (6) and remove the pail (7).

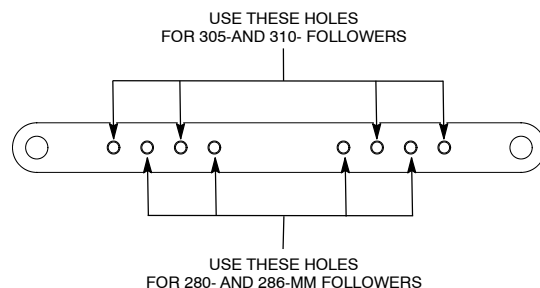
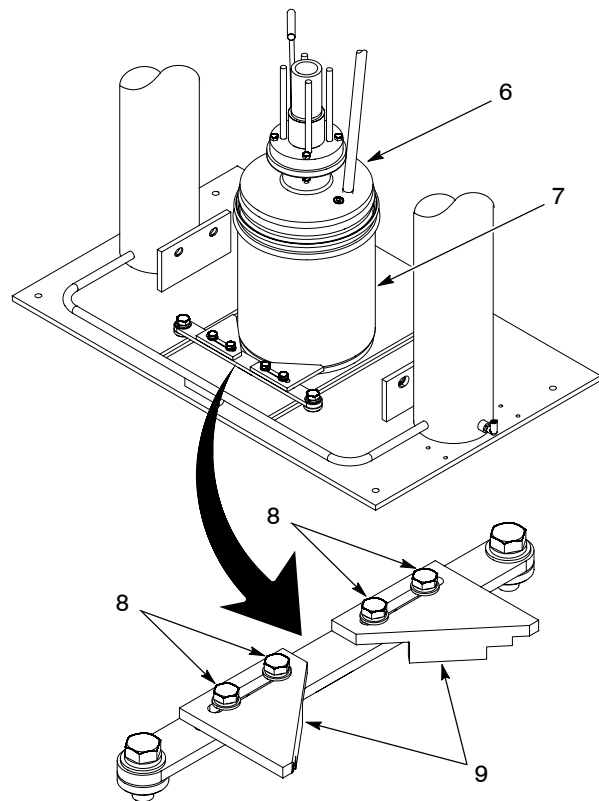
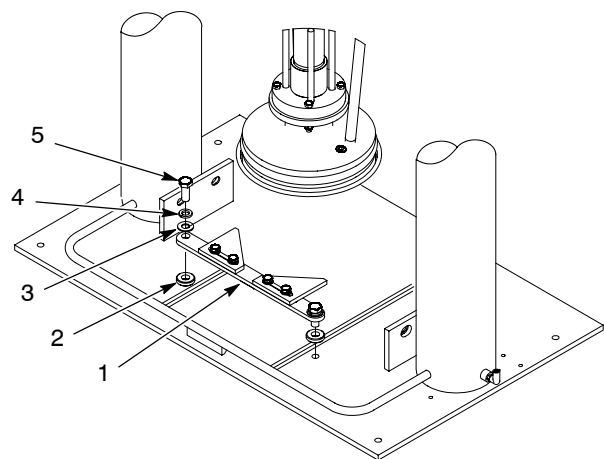
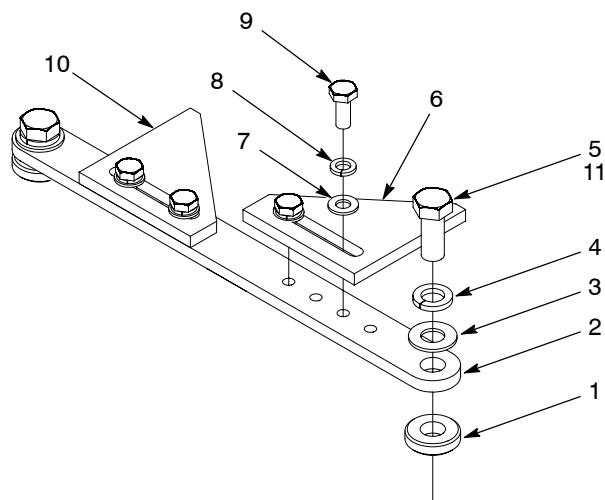


Figure 2 Installation

Parts

See Figure 3 and refer to the following parts lists.



Item	Part	Description	Qty
—	1084479	5- gallon pail centering pad module	1
1	144815	• Spacer, 1.5 OD x 0.687 ID x 0.38	2
2	1084491	• Bar, centering, 5-gallon follower, large frame	1
3	983090	• Washer, flat, e, 0.656 x 1.31 2 x 0.095	2
4	983440	• Washer, lock, e, 5/8	2
5	981482	• Screw, hex, 5/8-18 x 1.5, zinc, G8	2
6	1084492	• Pad, left hand, centering, 5-gallon follower, large frame	1
7	983192	• Washer, flat, regular, M10, zinc	4
8	983405	• Washer, lock, M10, zinc	4
9	809258	• Screw, hex, machine M10 x 25 mm	4
10	1084493	• Pad, right hand, centering, 5-gallon follower, large frame	1
11	900464	• Adhesive, Loctite 242 blue, removable, 50 ml	AR
AR: As Required			

Figure 3 Parts

Notes:

[illegible]

Change Record

[illegible]

Issued 6/09

Original copyright date 2009. Nordson, the Nordson logo, and Rhino are registered trademarks of Nordson Corporation.
All other trademarks are the property of their respective owners.