

Description

See Figure 1. The drum position sensor (1) provides a signal to the system controller to verify that a drum is in position below the follower plate or heated platen.

When a drum is placed between the frame hold down shoes (3), it makes contact with the sensor plunger (2) and closes a circuit to the system controller. Ram movement during normal operation is automatic once the follower plate or heated platen is inside the drum.

If the sensor plunger does not detect a drum, ram movement needs to be manually controlled using the two-hand control buttons.

Procedures for installing a 2- or 4-post drum position sensor are provided in the following paragraphs.

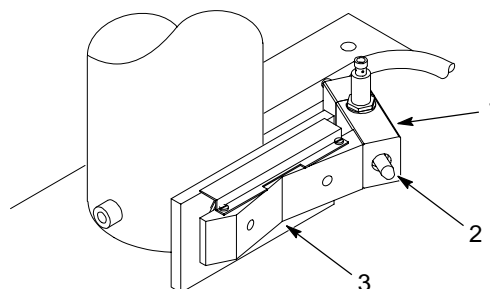


Figure 1 Typical Drum Position Sensor

Two-Post Installation

1. See Figure 2. Apply Loctite to the threads of the screws (1). Install the drum position sensor (2) onto the hold down shoe (4) using the screws. Tighten the screws securely.
2. Connect the cable from the controller to the proximity sensor (3).



If the follower plate or heated platen needs to be lowered and a drum is not positioned on the frame, place support blocks on the frame base as shown in Figure 2 to prevent damage to the drum position sensor.

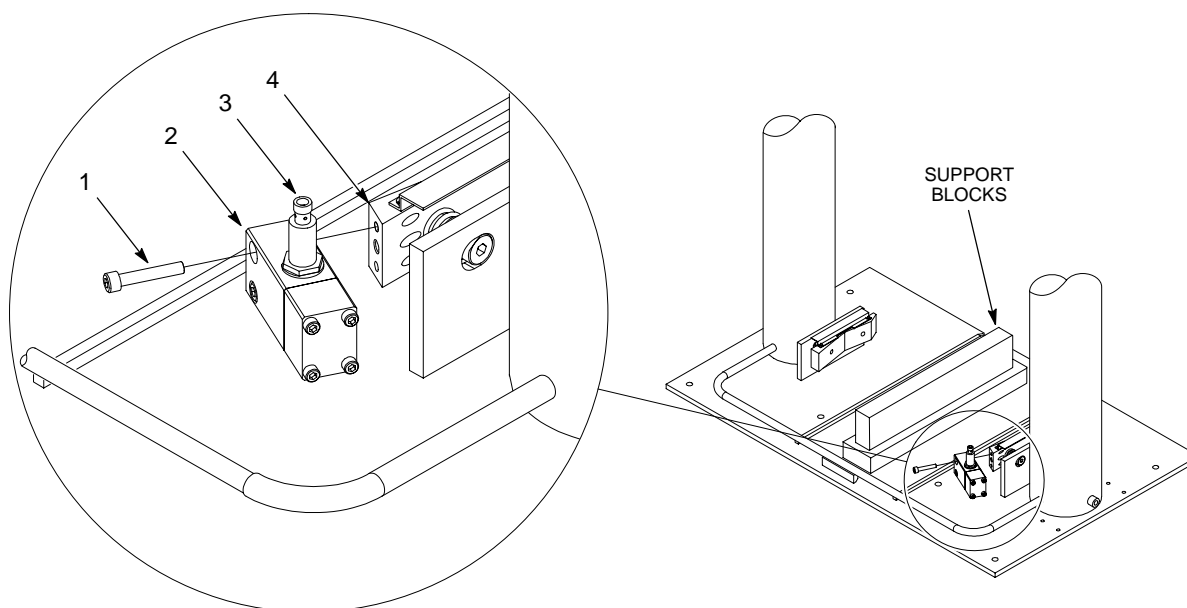


Figure 2 Two-Post Drum Position Sensor

Four-Post Installation

1. See Figure 3. Apply Loctite to the threads of the screws (1). Install the mounting bracket (5) to the drum position sensor (2) using the screws (1). Tighten the screws securely.
2. Apply Loctite to the threads of the screws (4). Install the sensor assembly onto the hold down shoe (6) using the screws. Tighten the screws securely.
3. Connect the cable from the controller to the proximity sensor (3).



CAUTION



If the follower plate or heated platen needs to be lowered and a drum is not positioned on the frame, place support blocks on the frame base as shown in Figure 3 to prevent damage to the drum position sensor.

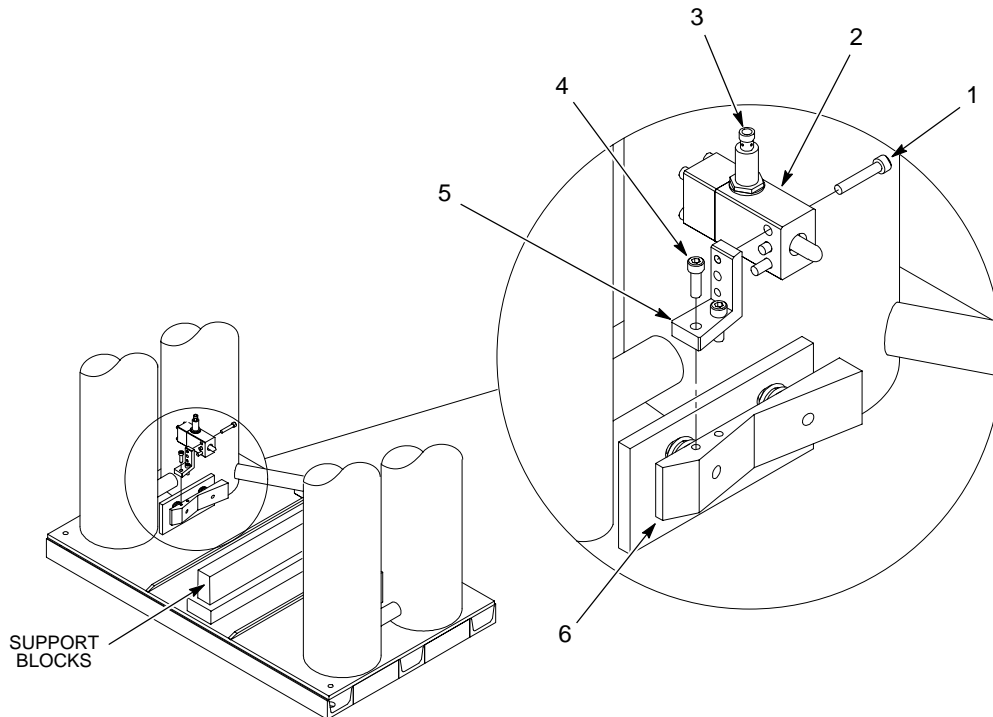


Figure 3 Four-Post Drum Position Sensor

Adjust the Proximity Sensor

See Figure 4. Perform the following if it is necessary to adjust the proximity sensor (1):

1. Disconnect the cable from the proximity sensor (1).
2. Loosen the proximity sensor jam nut (2). Push in on the plunger (4) until the target surface (5) is below the proximity sensor (1).
3. Screw the proximity sensor (1) into the sensor block (3) until it makes contact with the target surface (5) on the plunger (4).
4. Back out the proximity sensor (1) one full turn. Tighten the jam nut (2).

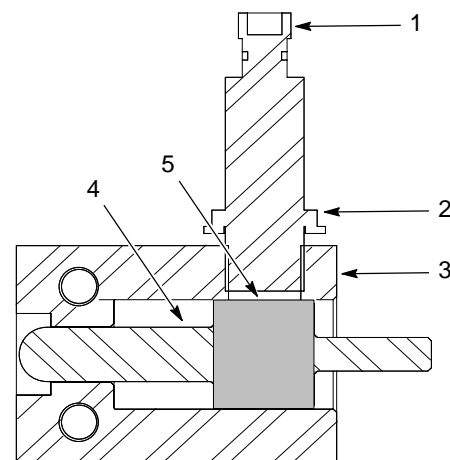


Figure 4 Proximity Sensor Adjustment

Parts

See Figure 5 and refer to the following parts list. To order parts, call the Nordson Customer Service Center or your local Nordson representative.

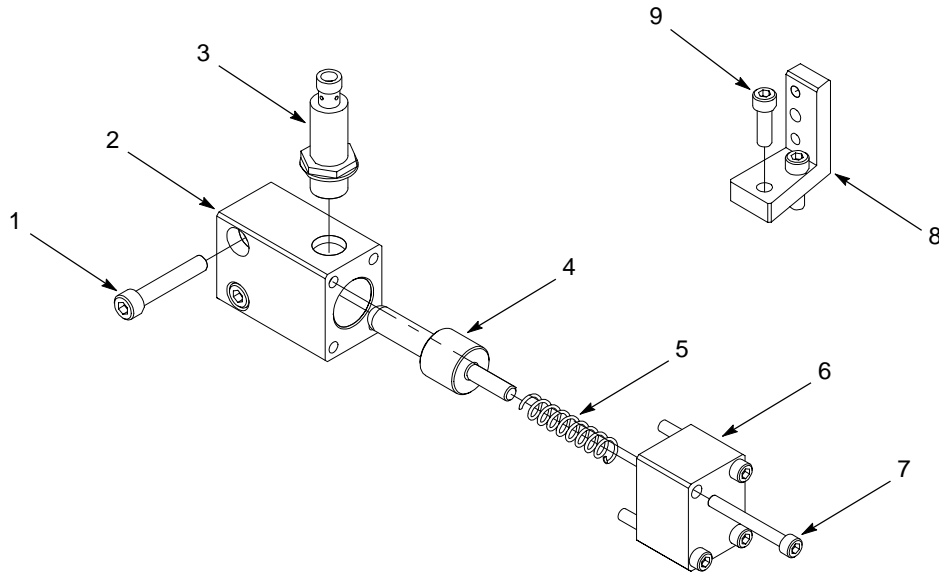


Figure 5 Parts

Item	Part	Part	Description	Qty
—	1082298		Sensor, drum-in, 2-post frame	1
—		1088693	Sensor, drum-in, 4-post frame	1
1	1058878	1058878	• Screw, socket M8 x 45	2
2	1082330	1082330	• Block, sensor	1
3	1070254	1070254	• Sensor, proximity, 18mm, 24v, PNP, NO, Micro	1
4	1082331	1082331	• Plunger, sensor	1
5	1082575	1082575	• Spring, compression	1
6	1082332	1082332	• Plate, sensor	1
7	982034	982034	• Screw, socket, M6 x 50	4
8		1088181	• Bracket	4
9		982395	• Screw, socket, M8 x 1.25 x 25	2

Notes:

[illegible]

Issued 9/08

Original copyright date 2008. Nordson and the Nordson logo are registered trademarks of Nordson Corporation.
All other trademarks are the property of their respective owners.