

Description

See Figure 1. The hose hanger module supports the cables, hoses, and tubing between the control plate and the pump to prevent them from interfering with the upward and downward movement of the ram assembly.

SD2/XD2 Hose Support Module

See Figure 1 and the following parts list.

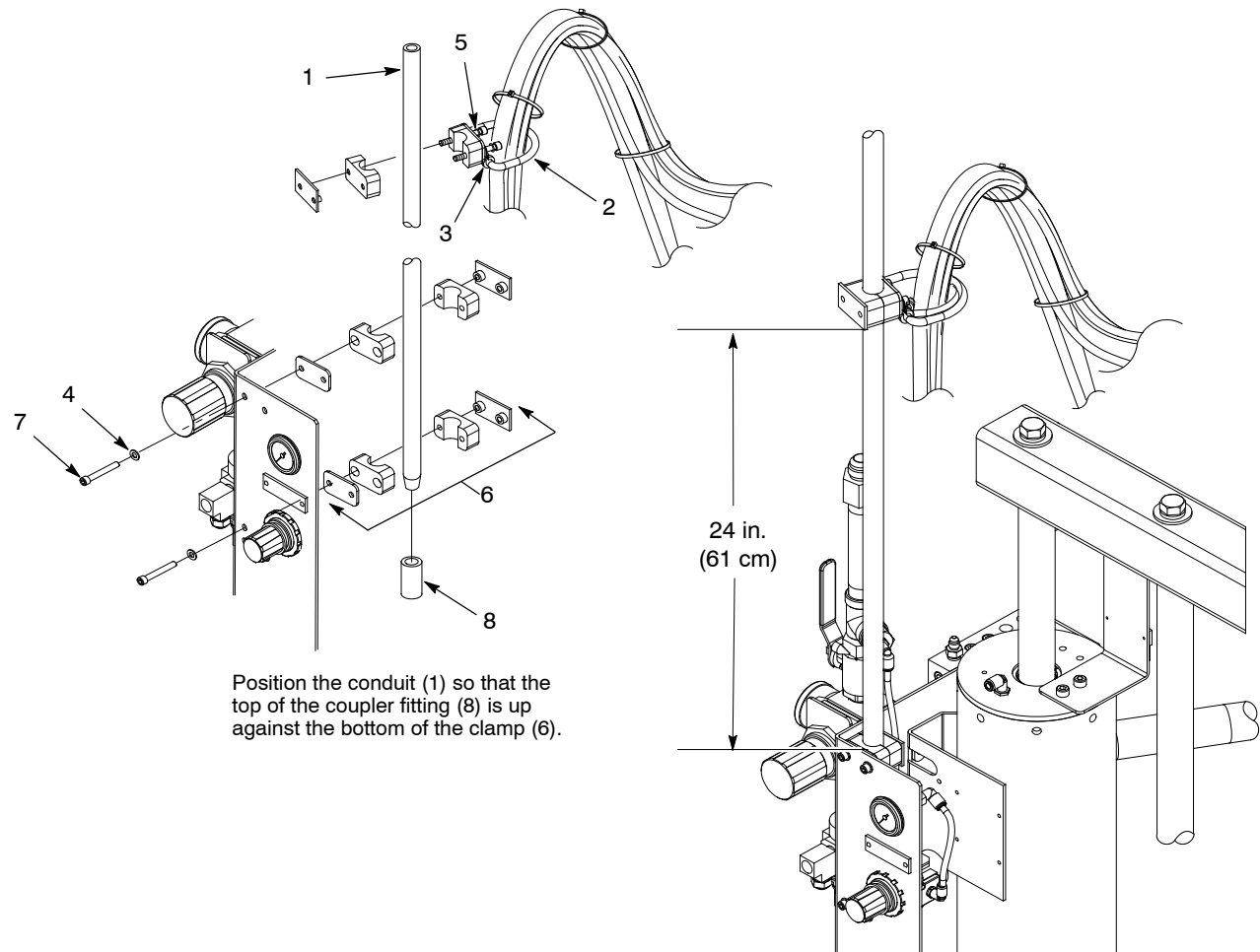


Figure 1 Typical Rhino SD2/XD2 Installation

Item	Part	Description	Quantity	Note
—	1043662	Module, pole, hose hanging	1	
1	1044506	• Conduit, ridged, 1/2-in. steel, 42-in.	1	
2	1043384	• D-ring, stainless steel	1	
3	1043385	• Clamp, hose, 0.31 OD, cushion	2	
4	983410	• Washer, flat, M6	4	
5	983141	• Washer, lock 1/4	2	
6	1043413	• Clamp, 1/2-in. pipe	3	
7	981557	• Screw, socket, 1/4-20 x 1.75	6	
8	1044507	• Fitting, coupler, electric conduit, 1/2-in.	1	

VE Hose Support Module

See Figure 2 and the following parts list.

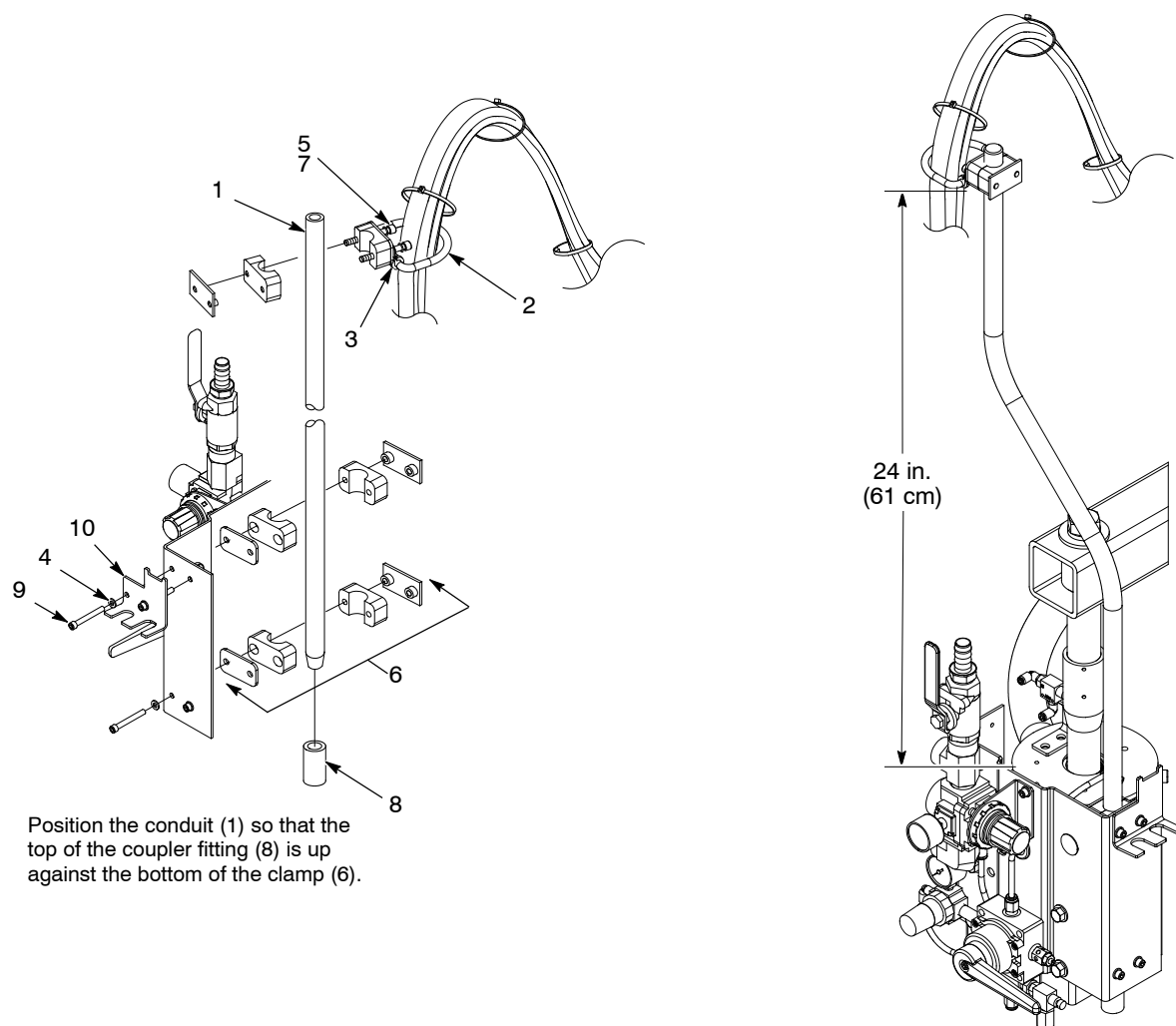


Figure 2 Typical Rhino VE Hose Support Installation

Item	Part	Part	Description	Quantity
—	1097304		Module, pole, hose hanging, small frame	1
—		1602216	Module, extended pole, hose hanging, large frame	1
1	1602154	1602213	• Pole, hose hanging, SD2 VE	1
2	1043384	1043384	• D-ring, stainless steel	1
3	1043385	1043385	• Clamp, hose, 0.31 OD, cushion	2
4	983410	983410	• Washer, flat, M6	4
5	983141	983141	• Washer, lock 1/4	2
6	1043413	1043413	• Clamp, 1/2-in. pipe	3
7	981557	981557	• Screw, socket, 1/4-20 x 1.75	2
8	1044507	1044507	• Fitting, coupler, electric conduit, 1/2-in.	1
9	981441	981441	• Screw, socket, 1 / 4/-20 x 2	4
10	1097446	1097446	• Bracket, tube	1

Issued 12/12

Original copyright date 2007. Nordson, the Nordson logo, and Rhino are registered trademarks of Nordson Corporation. All other trademarks are the property of their respective owners.