



WARNING

Allow only qualified personnel to perform the following tasks. Follow the safety instructions in this document and all other related documentation.

Remove the Packing Gland

| The air motor lockout valve is item 1 in Figure 1. | |
|--|--|
| Set air motor lockout valve to ... | Then ... |
| ON | 1. See Figure 1. Operate air motor until coupling (5) is accessible. |
| OFF | <ol style="list-style-type: none"> Place elevator in NEUTRAL position and shut off compressed air supply (1). Depending upon the system, perform one of the following: <ul style="list-style-type: none"> Open ball valve (2). Open bleed valve (3) no more than three turns. Bleed hydraulic pressure through valve and guns. Leave valve open. Remove screws (4) securing coupling (5) to coupling shaft (10) and plunger rod (9). Drain solvent chamber cup (6). Set air motor regulator to 0 bar/psi. |
| ON | <ol style="list-style-type: none"> Using minimal air pressure, cycle air motor to lower plunger rod (9). Cycle air motor to raise air motor shaft. |
| OFF | <ol style="list-style-type: none"> Remove solvent chamber cup (6) from upper collar (8). Disconnect tubing (11) from fittings (12). Remove screws (7) from upper collar (8). Insert screwdrivers into pry slots (13). Pry upper collar (8) off of pump body (14). If collar cannot be removed from pump body, perform the following: <ol style="list-style-type: none"> Insert two screws (7) into upper collar threaded holes as shown. Alternate tightening screws (7) to remove packing gland assembly. Loosen set screw (15) and remove collar (8) from packing gland (16). Remove fittings (12) from packing gland (16). |

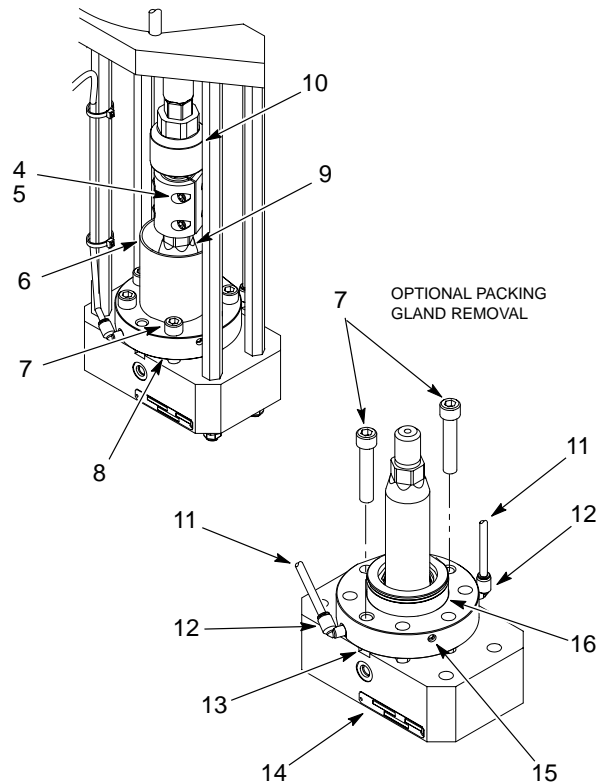
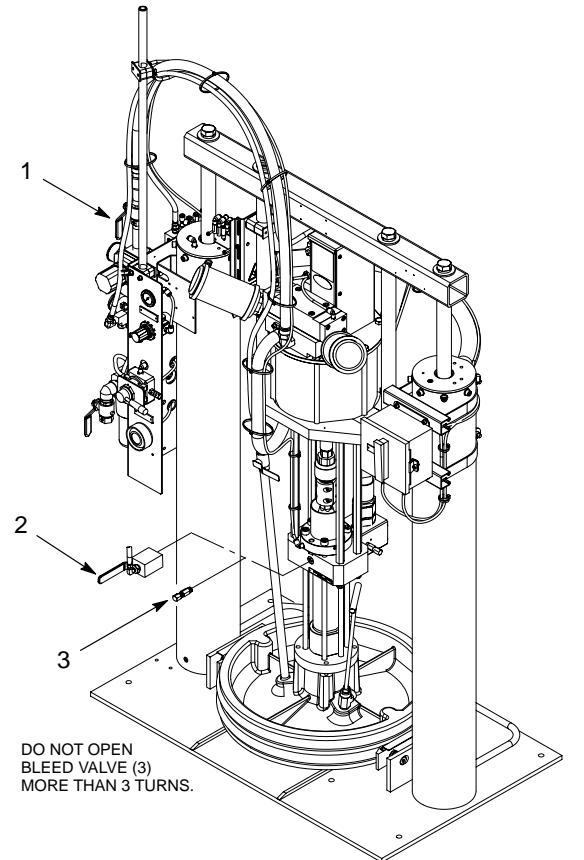


Figure 1 Removing the Packing Gland

Install the Packing Gland

NOTE: The following items are required to perform this procedure:

- Mobil SHC 634 lubricant: Nordson Part No. 156289
- Loctite 242 thread adhesive: Nordson Part No. 900464

| The air motor lockout valve is item 1 in Figure 1. | |
|--|---|
| Set air motor lockout valve to . . . | Then . . . |
| OFF | <ol style="list-style-type: none"> 1. See Figure 2. Clean upper collar (1). 2. Install the fittings (3) into the packing gland (2) and tighten securely. 3. Lubricate packing gland O-ring (2), I.D. of packing gland seals, and bushing area with Mobil SHC 634 lubricant. 4. Install upper collar (1) onto packing gland (4). Tighten set screws (5) until they make contact with packing gland. Do not over tighten. 5. Install packing gland assembly into pump body (6). 6. Install solvent chamber cup (9) onto packing gland assembly. 7. Place packing gland insertion tool (8) on top of solvent chamber cup (9). |
| ON | <ol style="list-style-type: none"> 8. Make sure that air motor is set to a low pressure and a slow stroke. Using air motor, push assembly onto the plunger rod. 9. Using manual override (13), raise air motor shaft to top of its stroke. |
| OFF | <ol style="list-style-type: none"> 10. Remove packing gland insertion tool (8) and solvent chamber cup (9). 11. Apply Never Seeze lubricant to threads of the screws (11). Install screws into packing gland collar. Tighten the screws to 102–108 N•m (75–80 ft-lb). 12. Connect tubing (10) to fittings (3). 13. Refer to the <i>Install the Coupling Halves</i> section to complete the packing gland replacement procedure. |

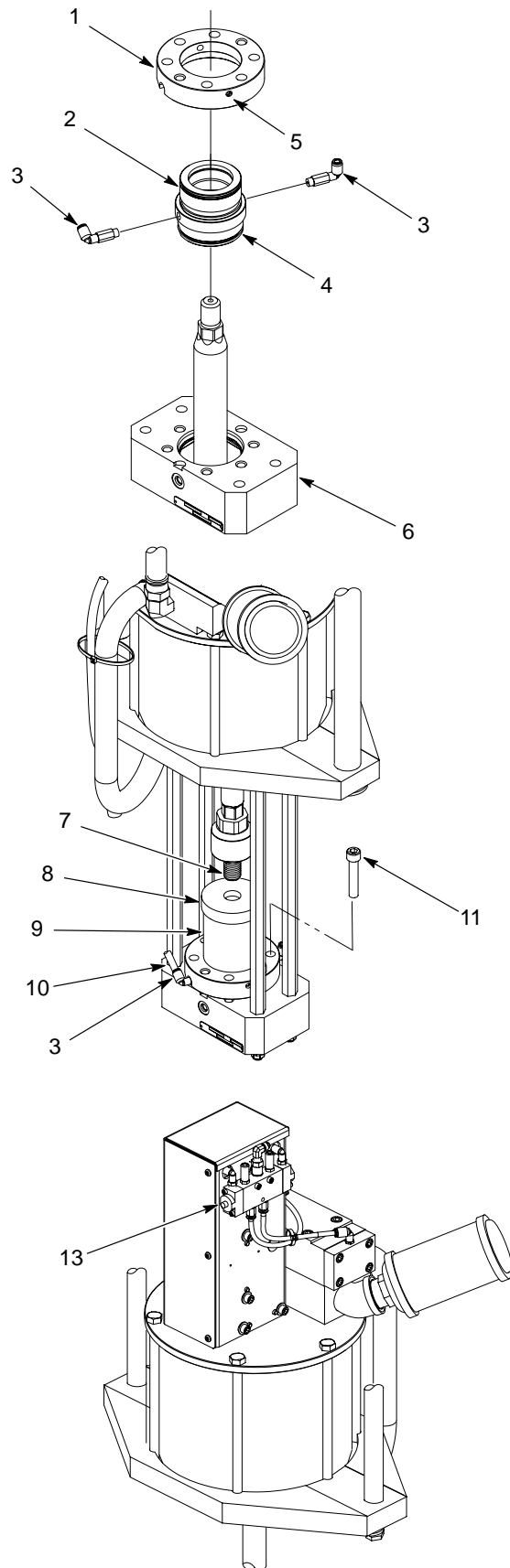


Figure 2 Installing the Packing Gland

Install the Coupling Halves

NOTE: The following items are required to perform this procedure:

- Mobil SHC 634 lubricant: Nordson Part No. 156289
- Loctite 242 thread adhesive: Nordson Part No. 900464

| The air motor lockout valve is item 1 in Figure 1. | |
|--|--|
| Set air motor lockout valve to ... | Then ... |
| ON | <ol style="list-style-type: none"> 1. Adjust air motor regulator to 0 bar/psi. 2. Using minimal pressure, cycle air motor until it is at the beginning of its up stroke. |
| OFF | <p>NOTE: The coupling halves are a matched set. Each half is stamped with the same serial number.</p> <ol style="list-style-type: none"> 3. See Figure 3. Make sure that grooved end of each coupling half (2) is facing upward. Position both halves (2) over coupling shaft (1) and plunger rod (4) as shown. 4. Make sure that three threads of coupling shaft (1) and plunger rod (4) are engaged in coupling. Secure coupling halves with coupling screws (3). 5. Make sure that bleed valve on pump body is open and not plugged. |
| ON | <ol style="list-style-type: none"> 6. Using minimal air pressure at air motor regulator, apply pressure to air motor until air motor is at top of its stroke. |
| OFF | <ol style="list-style-type: none"> 7. Remove the coupling screws (3) securing the coupling halves (2). 8. Lubricate solvent chamber O-ring. Install solvent chamber O-ring and solvent chamber (5). |
| ON | <ol style="list-style-type: none"> 9. Using minimal air pressure, cycle the air motor slowly until coupling shaft almost touches plunger rod (4). |

| Set air motor lockout valve to ... | Then ... |
|------------------------------------|--|
| OFF | <ol style="list-style-type: none"> 10. Install one coupling half (2) as shown. Using a $\frac{15}{16}$-in. wrench, adjust coupling shaft to obtain a 0.76–2.54 mm (0.030–0.100 in.) gap between coupling shaft and plunger rod (4). 11. Install remaining coupling half (2). Make sure that gaps between sides of coupling halves are equal. 12. Apply Loctite 242 to threads of coupling screws (3). Install coupling screws. Tighten the screws to 10–21 N•m (14–16 ft.-lb.). 13. Using Mobil SHC 634 lubricant, fill solvent chamber cup (5) to 0.75 in. from the top. 14. See Figure 1. Depending upon the system, close either ball valve (2) or bleed valve (3). |

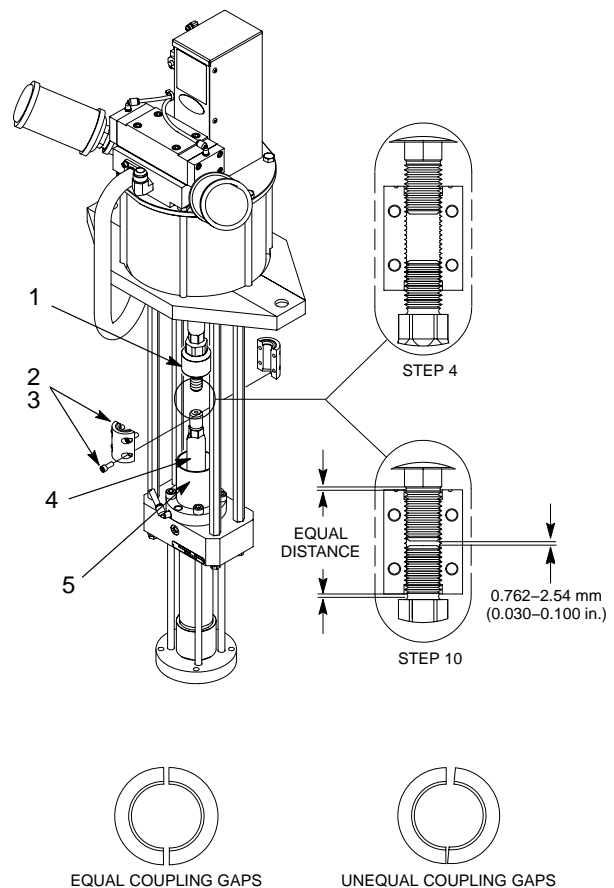


Figure 3 Installing the Coupling Halves

Notes:

[illegible]

Original copyright date 2007. Nordson, the Nordson logo, and Rhino are registered trademarks of Nordson Corporation.
All other trademarks are the property of their respective owners.