

Description

The Rhino SD2/XD2 pressure relief valves are used inline with the air motor supply to limit the pump output pressure. Kits are available with 65 and 80 psi pressure relief valves.

Depending upon the kit, the pressure relief valves are designed to vent if the air motor supply pressure exceeds either 65 or 80 psi. Lowering the air motor supply pressure resets the relief valve.

Table 1 lists the maximum output limits for the pressure relief valves.

Table 1 Maximum Output Limits

Pressure Relief Valve	Pump Ratio	Maximum Output Limit
65 psi	48:1	3100 psi
	65:1	4200 psi
80 psi	48:1	3800 psi
	65:1	5200 psi

Installation



WARNING: Allow only qualified personnel to perform the following tasks. Follow the safety instructions in this document and all other related documentation.

NOTE: Apply pipe thread sealant to all NPT threads.

1. See Figure 1 Remove the nipple (4) from the air motor ball valve (5) and discard.
2. Install the parts (1, 2, 3,) as shown.

Parts

See Figure 1 and the following parts list.

Item	Part	Description
—	1045662	Kit, pressure relief, 65 psi, TSSA
—	1049065	Kit, pressure relief, 80 psi, TSSA
1	-----	• Nipple, brass, 3/4 close
2	-----	• Tee, street, 3/4 NPTF
3	-----	• Relief valve, 65 or 80 psi

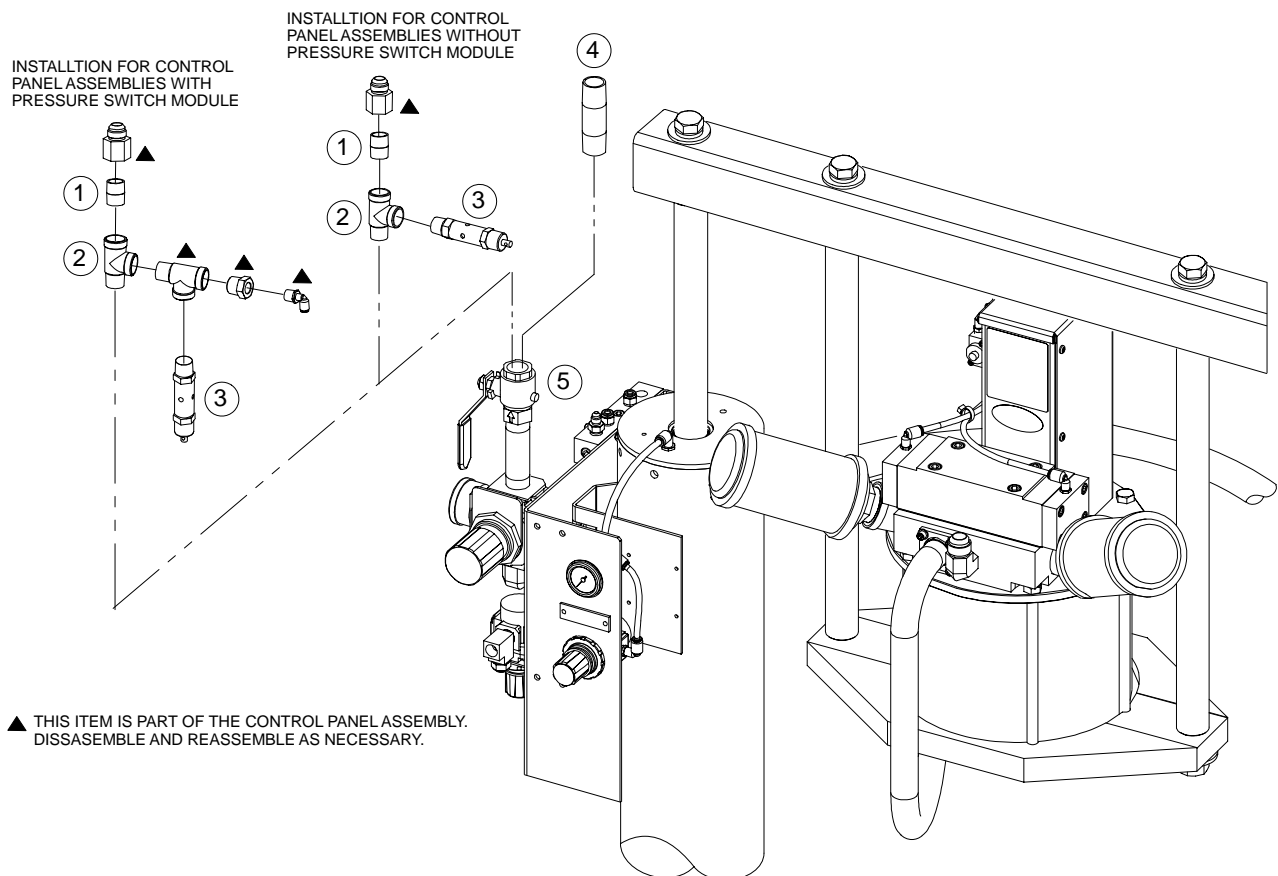


Figure 1 Rhino SD2/XD2 Pressure Relief Valves

Notes:

[illegible]

Issued 7/07

Original copyright date 2007. Nordson, the Nordson logo, and Rhino are registered trademarks of Nordson Corporation.
All other trademarks are the property of their respective owners.