

Description

See Figure 1. The Rhino SD2/XD2 Pump Runaway J-Box Module is designed for use with pneumatic crossover bulk unloaders in applications where the system or work cell controller do not control the changeover logic. It provides the I/O cable interface from the system or work cell controllers to the Rhino pump solenoid-operated air motor control valves, and the runaway proximity sensors.

The system or work cell controllers provide the logic for cycle counting and determining a pump runaway condition. If a pump runaway condition occurs, the system or work cell controller shuts off the air supply to the air motor and displays a fault condition.

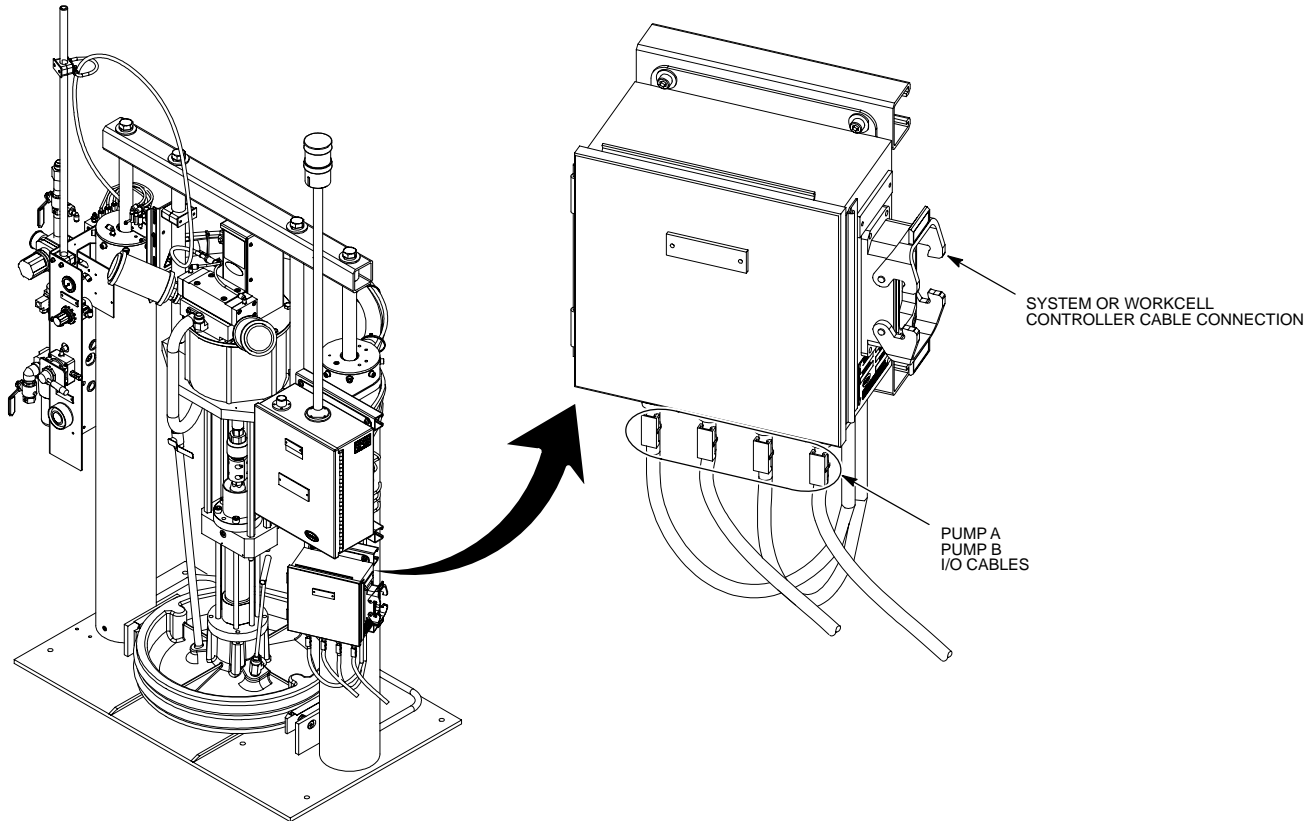


Figure 1 Rhino SD2/XD2 Pump Runaway J-Box Module

Installation



WARNING: Allow only qualified personnel to perform the following tasks. Follow the safety instructions in this document and all other related documentation.

1. See Figure 2. Loosen the nuts (3) and screws (4) on the clamps (2).

NOTE: Have an assistant help with installing the Pump Runaway J-box onto a frame. If the bulk unloader is not configured with a Pneumatic J-Box, install the top clamp (2) above the air crossover tube (5).

2. Install the Pump Runaway J-box (1) onto the clamps (2). If a Pneumatic J-Box (6) is installed, position the Pump Runaway J-Box as shown. Tighten the nuts (3) and screws (4) securely.

NOTE: Each cable has an identification tag.

3. See Figure 3. Connect the Pump A and Pump B cables as shown.
4. Connect the controller I/O cable to the connector.
5. Use the supplied tie wraps to secure the cables.

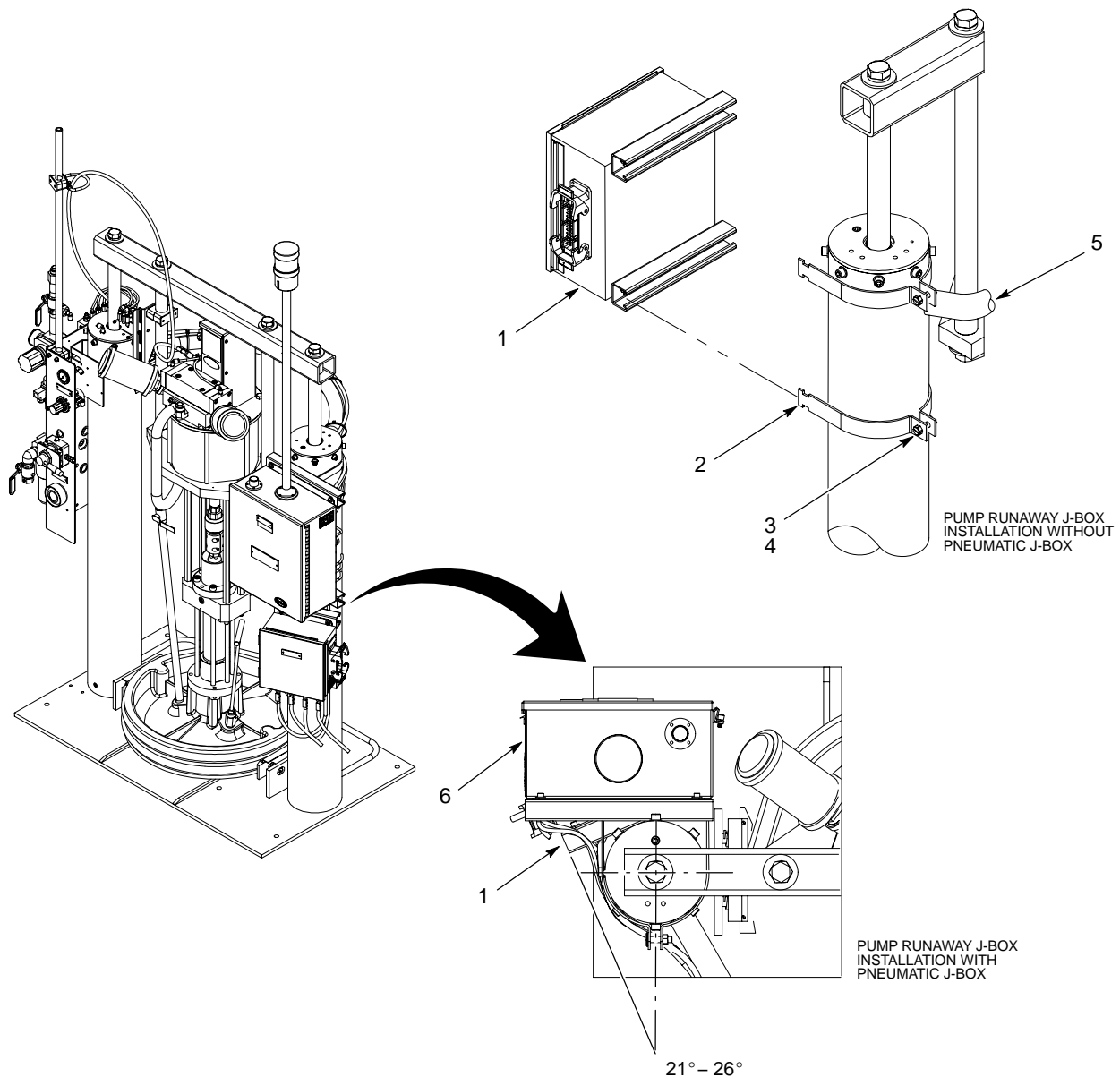


Figure 2 Installation

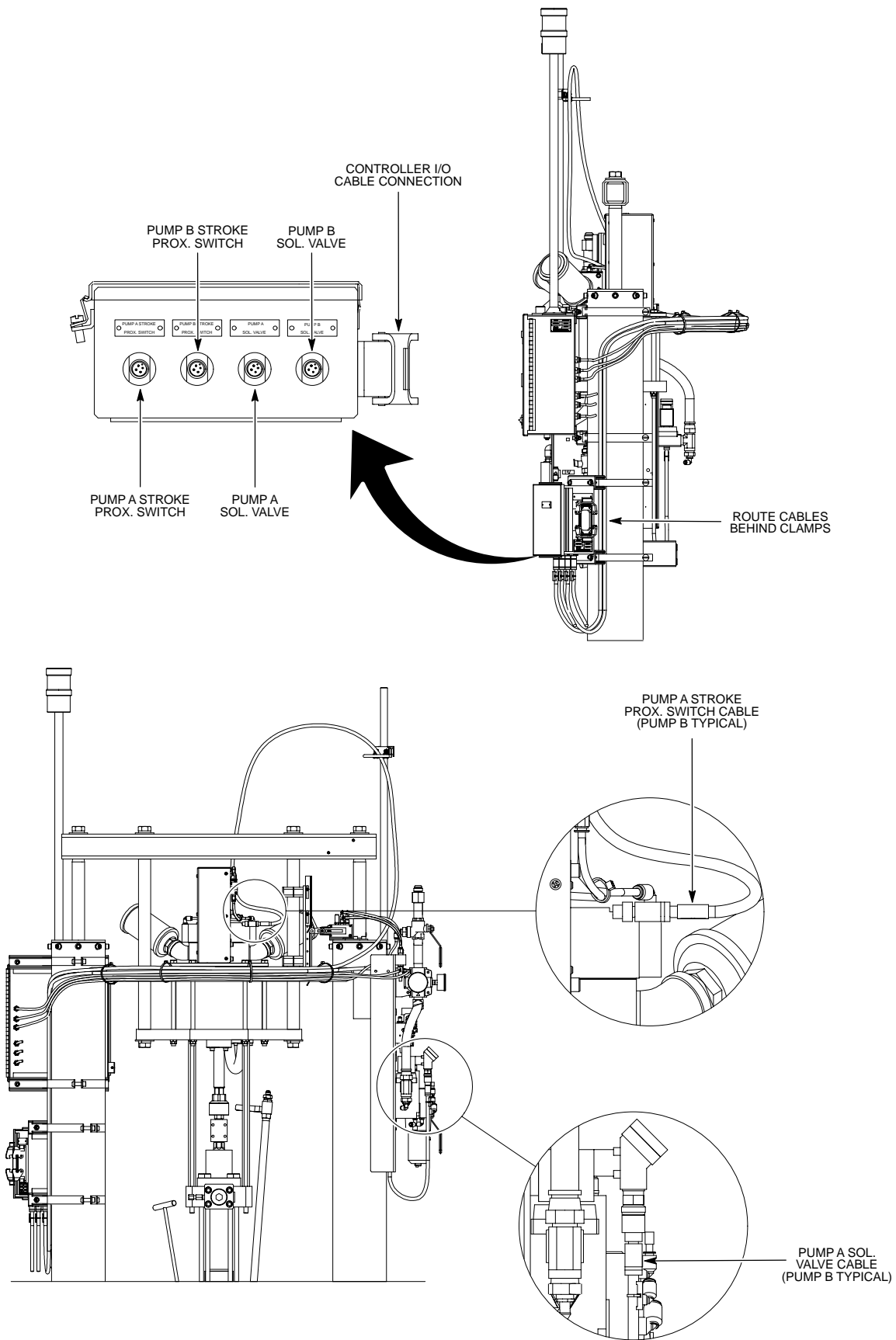


Figure 3 Cable Connections

Parts

See Figure 4. To order parts, call the Nordson Customer Service Center or your local Nordson representative.

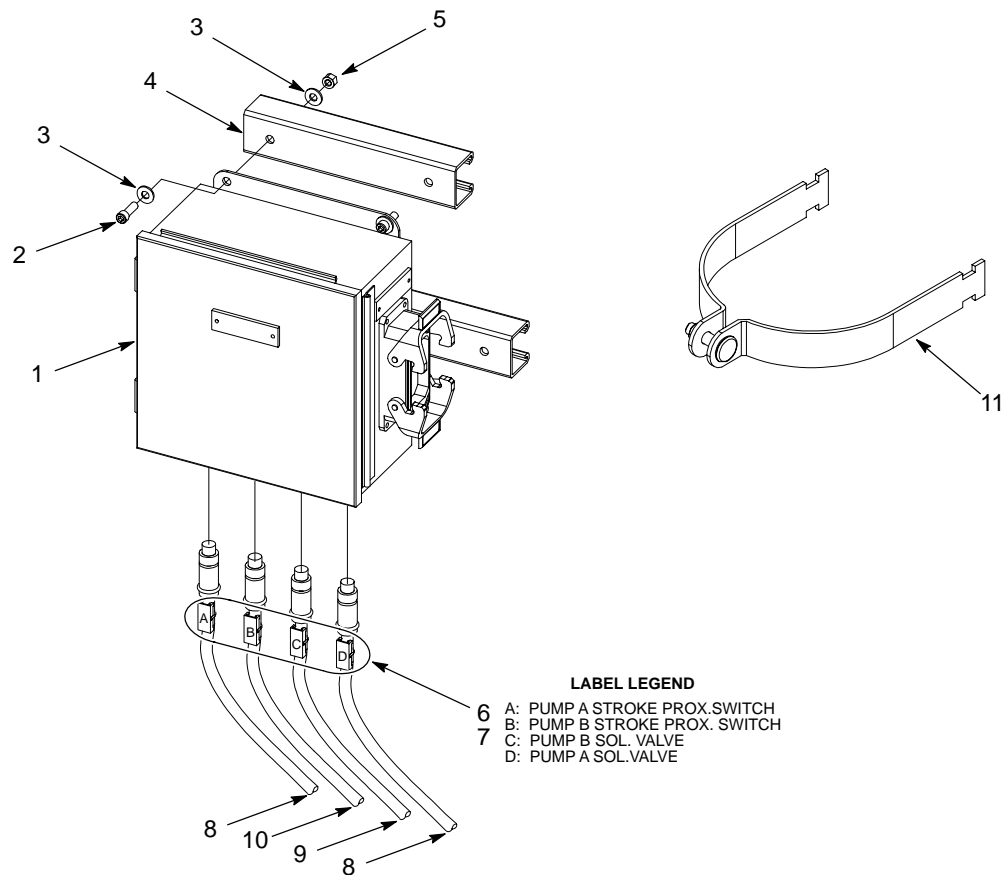
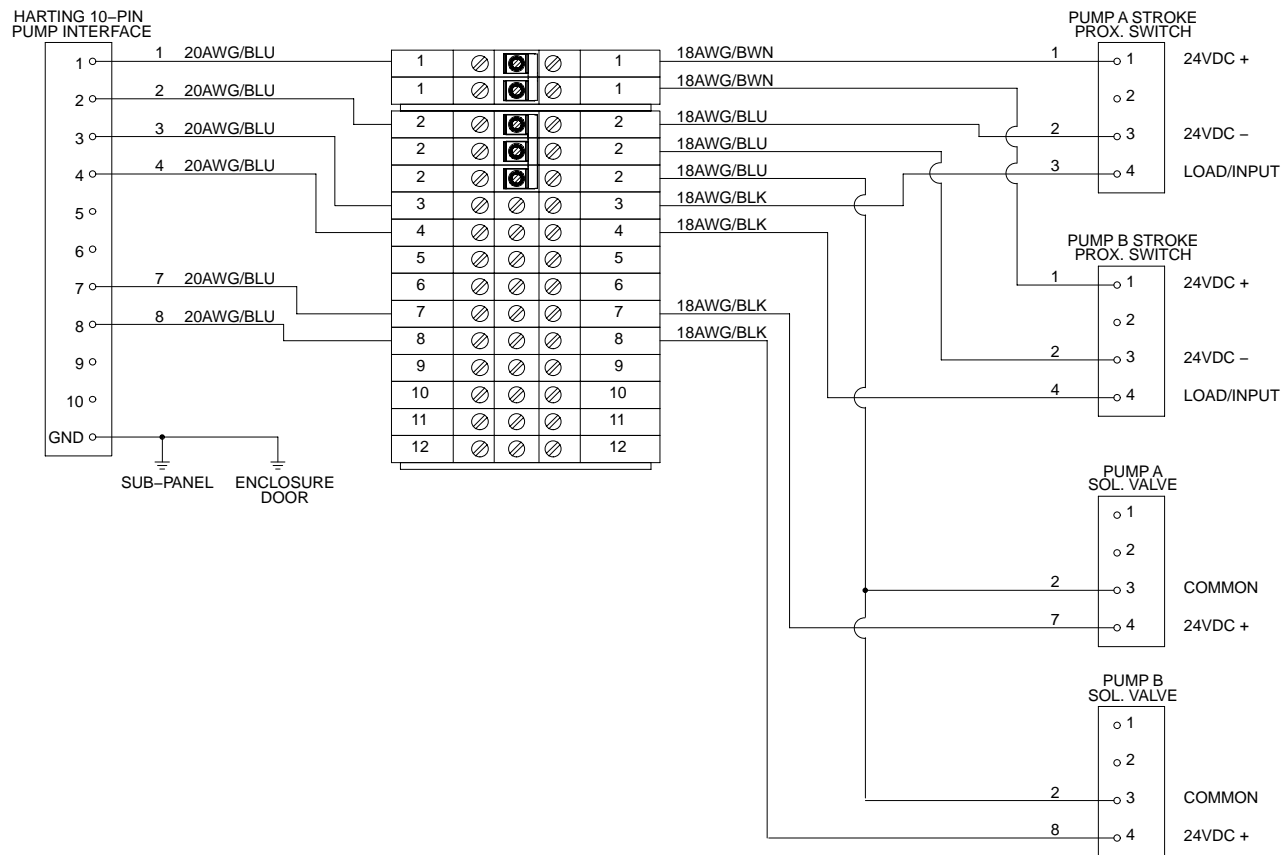


Figure 4 Parts

| Item | Part | Description | Qty | Note |
|------|---------|--|-----|------|
| — | 1071773 | Module, J-box, Pump Runaway, Rhino SD2/XD2 | 1 | |
| 1 | 1071774 | • J-Box | 1 | |
| 2 | 345750 | • Screw, socket, 1/4-20 x 0.75 | 4 | |
| 3 | 983504 | • Washer, flat, 0.281 x 0.734 x 0.063 | 8 | |
| 4 | 1050240 | • Channel, module clamping | 2 | |
| 5 | 984217 | • Nut, hex, lock, 1/4-20 UNC-2B | 4 | |
| 6 | 1071356 | • Kit, Label, J-box, runaway | 1 | |
| 7 | 939110 | • Strap, cable | 8 | |
| 8 | 1046801 | • Cable, 4-pin, Micro, DC, 18 AWG, 6 m | 2 | |
| 9 | 1045884 | • Cable, 4-pin, Micro, DC, 18 AWG, 4 m | 1 | |
| 10 | 1050327 | • Cable, 4-pin, Micro, DC, 18 AWG, 9 m | 1 | |
| NS | 324289 | • Cable, strap | 13 | |
| 11 | 1008914 | Clamp, 6.5 in., large frame | 2 | A |

NOTE A: The clamps are not included with the J-box and must be ordered separately.
NS: Not Shown

Schematic



Notes:

[illegible]

Issued 7/07

Original copyright date 2007. Nordson, the Nordson logo, and Rhino are registered trademarks of Nordson Corporation.
All other trademarks are the property of their respective owner.