



## WARNING

Allow only qualified personnel to perform the following tasks. Follow the safety instructions in this document and all other related documentation.

## Disassemble the Air Valve

1. Perform the following if the air valve is installed on the air motor:
  - a. Relieve air pressure to the Rhino SD/XD pump.
  - b. Remove the air valve from the air motor. Refer to the *Air Valve Replacement and Rebuild* procedure in the Rhino SD/XD Pump manual.
2. See Figure 1. Remove the socket-head screws (1) and end caps (2) from the air valve body (5).

3. Remove the spool (10) from the valve body (5). Remove the brass retainers (4), T-seals (8), and aluminum sleeves (9) from the spool. Discard the T-seals.

4. Some air valves contain the following parts:

- detent sleeve (6)
- detent sleeve O-ring (7)
- detents (11)
- detent spring (12)

Remove and discard these parts. They are no longer used in the air valve.

5. Remove and discard the O-rings (3) from the brass retainers (4).

Air valves without the parts listed in step 4 have an internal O-ring (13) in each brass retainer. Remove and discard this O-ring.

6. Inspect and replace any damaged components.

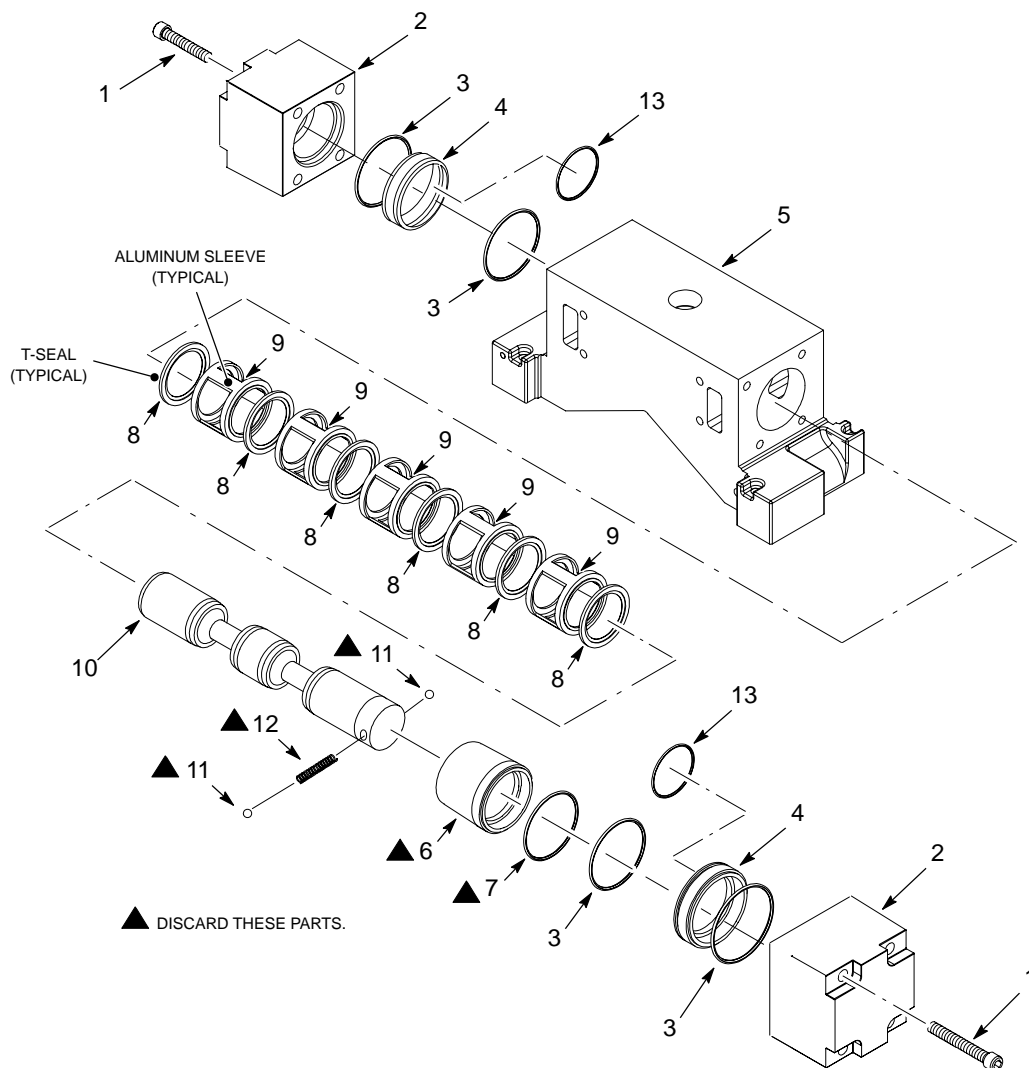


Figure 1 Air Valve Disassembly

## Assemble the Air Valve

1. See Figure 2. Lubricate the new O-rings (3, 8), T-seals (6), and spool (9) with TFE grease.
2. Install the T-seals (6) and aluminum sleeves (7) into the valve body (5) as shown.
3. Install the O-rings (3) onto the brass retainers (4).
4. Install the O-rings (8) into the brass retainers (4). Install the brass retainers into the air valve body (5).
5. Install the spool (9) into the air valve body (5).
6. Install the air caps (2) onto the air valve (5) using the screws (1). Tighten the screws securely.
7. Refer to the *Air Valve Replacement and Rebuild* procedure in the Rhino SD/XD Pump manual to install the air valve onto the air motor.

△ PARTS ARE INCLUDED IN  
AIR VALVE SERVICE KIT 1045235.

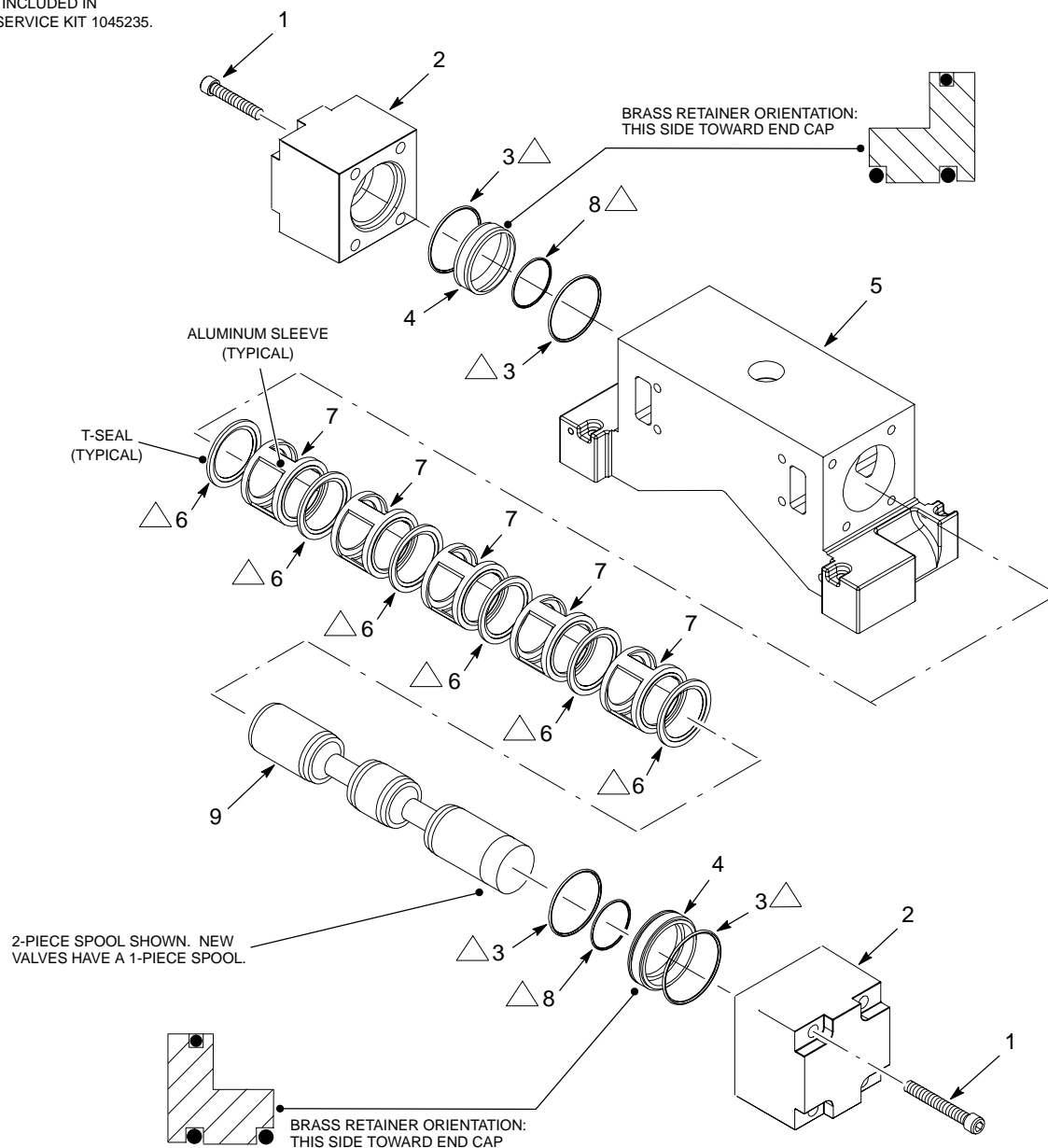


Figure 2 Air Valve Assembly