



WARNING

Allow only qualified personnel to perform the following tasks. Follow the safety instructions in this document and all other related documentation.

Startup

1. Turn the Mastic controller (1) main disconnect switch to ON.
2. Press the SEALER POWER ON button on the Mastic controller (1).
3. Make sure that the main air shut off valves to the pumps are opened on the Rhino bulk unloaders (2)
4. From the **SYSTEM STATUS** screen, touch **SYSTEM SET-UP**. The **SYSTEM SET-UP** screen appears.
5. Touch **Pump Stand**. Touch **Pressurize** under **Pump Controls**.
6. Turn the SEALER switch on the Mastic controller (1) to the MAN position.
7. From the **SYSTEM STATUS** screen, touch **VIEW GUNS**.
8. Touch **PURGE ON**. When the status of each active gun (3) turns green, touch **PURGE OFF**. Repeat this step two to three times.
9. Turn the SEALER switch on the Mastic controller (1) to the AUTO position.

Shutdown

1. From the **SYSTEM STATUS** screen, touch **SYSTEM SET-UP**. The **SYSTEM SET-UP** screen appears.
2. From the **SYSTEM SET-UP** screen, touch **Pump Stand**. Touch **De-Pressurize** under **Pump Controls**. Touch **BACK** to return to the **SYSTEM SET-UP** screen.
3. Press the SEALER STOP button on the Mastic controller (1).

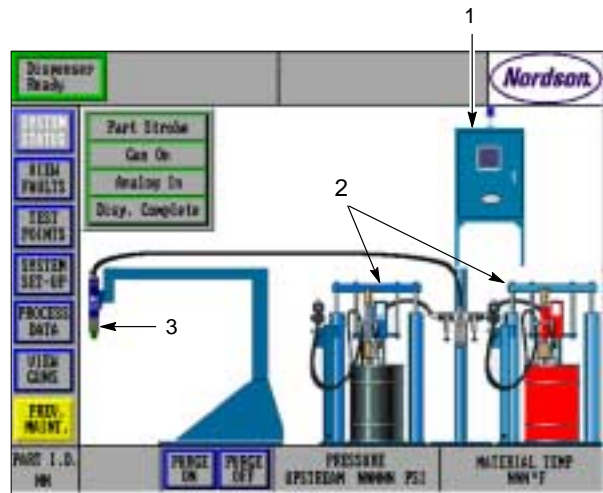


Figure 1 SYSTEM STATUS Screen

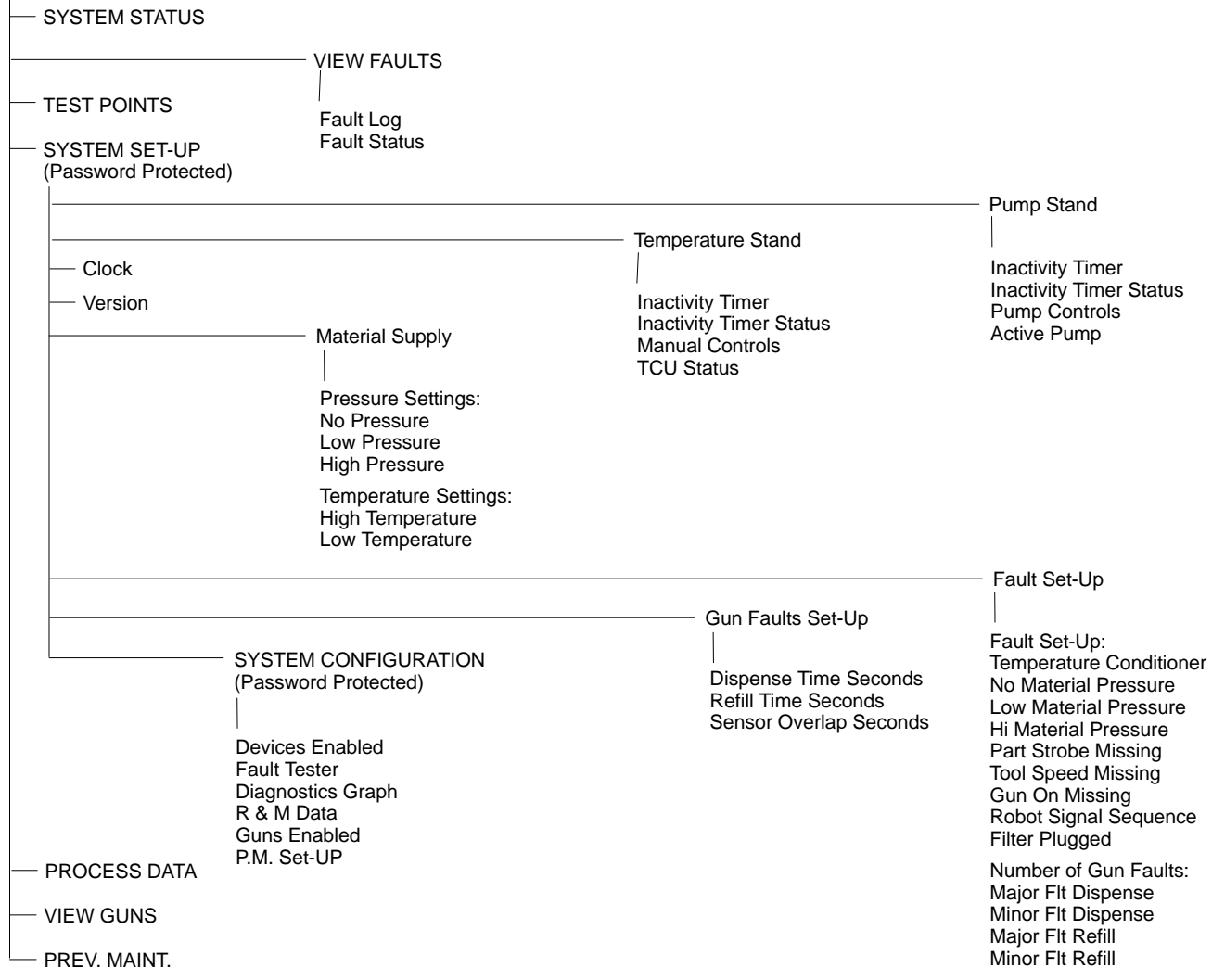
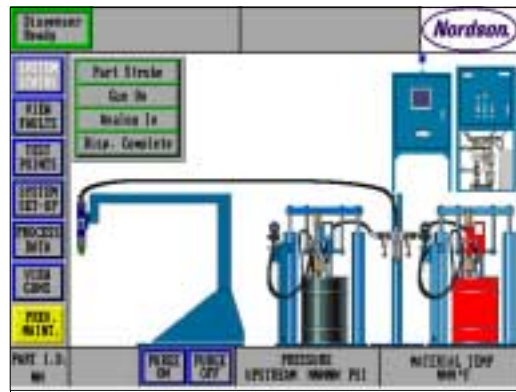


Figure 2 Mastic Controller Menu Tree

Original copyright date 2003. Nordson and the Nordson logo are registered trademarks of Nordson Corporation.