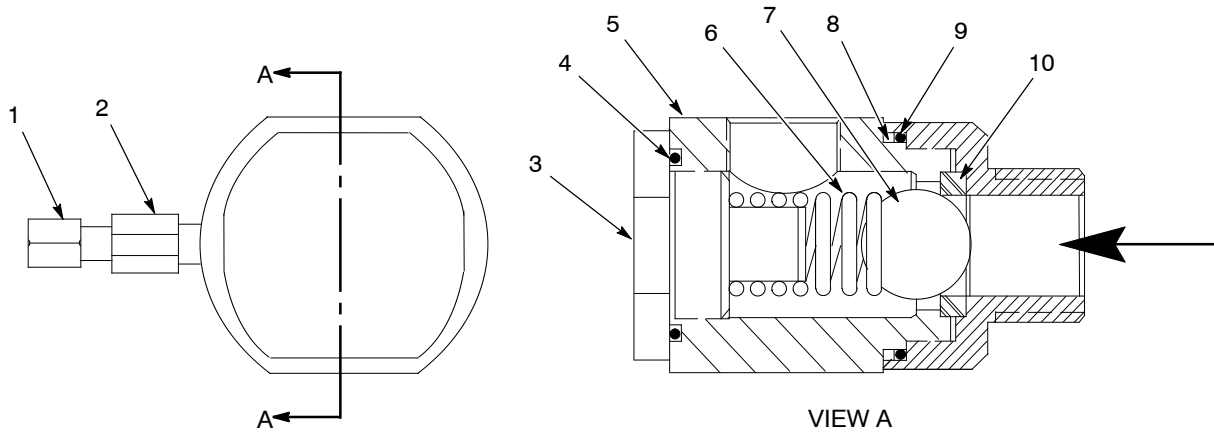




# 1 1/4-Inch Ball Check Valve with EPDM O-Rings



## SPECIFICATIONS

- Maximum Air Pressure: 413 bar (6000 psi)
- Opening Pressure: 1.4 bar (20 psi)
- Inlet Port Size: 1 1/4 NPTF Male
- Outlet Port Size: 1 1/4 NPTF Female
- Length: 17.3 cm (6.82 in.)
- Diameter: 9.3 cm (3.68 in.)
- Construction: Black oxide coated steel

Item	Part	Description	Qty	Note
—	1041082	Valve, check, ball, 1 1/4 NPTF, EPDM	1	
1	124697	• Poppet, screw, adjustable	1	A
2	124698	• Body, bleeder, valve	1	
3	124933	• Head, valve, check, upper	1	
4	1041080	• O-ring, EPR, 2.25 x 2.5 x 0.139	1	B
5	124932	• Body, valve, check, 1 1/4 in.	1	
6	987006	• Spring, compression, 1.22 x 2 in. long	1	
7	900006	• Ball, 440ss, 1.5, 100	1	
8	954019	• Ring, back-up, single, 2 9/16 in.	1	
9	1041069	• O-ring, EPR, 2.562 x 2.75 x 0.103	1	B
10	124934	• Seat, ball, valve, check	1	
11	124931	• Head, valve, check, lower	1	

NOTE A: Use PTFE tape on threads. Order part 902504, Tape, PTFE.

B: Lubricate O-rings before assembling. Order part 900223, Lubricant, Parker.