

Related Documentation

References to the following documentation may be necessary to supplement this instruction sheet:

2-8 CC Ejector Gun (Manual 1040029)

Consumable Items

Obtain the following items before replacing the fluid cartridge.

Table 1 Consumable Items

Item	Part	Application
Threadlocking Adhesive	900200	Apply to threads of screws.
TFE Grease	1031834	Lubricate seals and o-rings.



WARNING

Allow only qualified personnel to perform the following tasks. Follow the safety instructions in this document and all other related documentation.

Remove the Fluid Cartridge

1. See Figure 1. Loosen the coupling screws (1).
2. Cycle the gun to disconnect the needle (3) from the coupling (2).
3. Using a flat tip screwdriver, push down on the needle (3). Remove the needle from the nozzle adapter (8) using needle nose pliers.
4. Remove the screws (9) securing the nozzle adapter (8) and spacers (6) to the gun body (4). Check the nozzle o-ring (7) for damage and replace if necessary.
5. Remove the fluid cartridge (5) from the gun body (4).

Install the Fluid Cartridge

1. See Figure 1. Lubricate the seals and the area noted on the new fluid cartridge (5) with TFE grease (11). Insert the fluid cartridge into the gun body (4).
2. Apply threadlocking compound to the screws (9). Lubricate the o-ring (7) with TFE grease (11).
3. Install the spacers (6) and nozzle (8) using the screws (9). Tighten the screws to 9.7 ± 1 ft-lb (13.2 ± 1.3 N•m).
4. Carefully insert the needle (3) through the nozzle (8). Using a small diameter hex wrench (10), push on the needle until it bottoms out into the coupling (2).
5. Tighten the coupling screws (1) to 7 in.-lb (0.75 N•m).

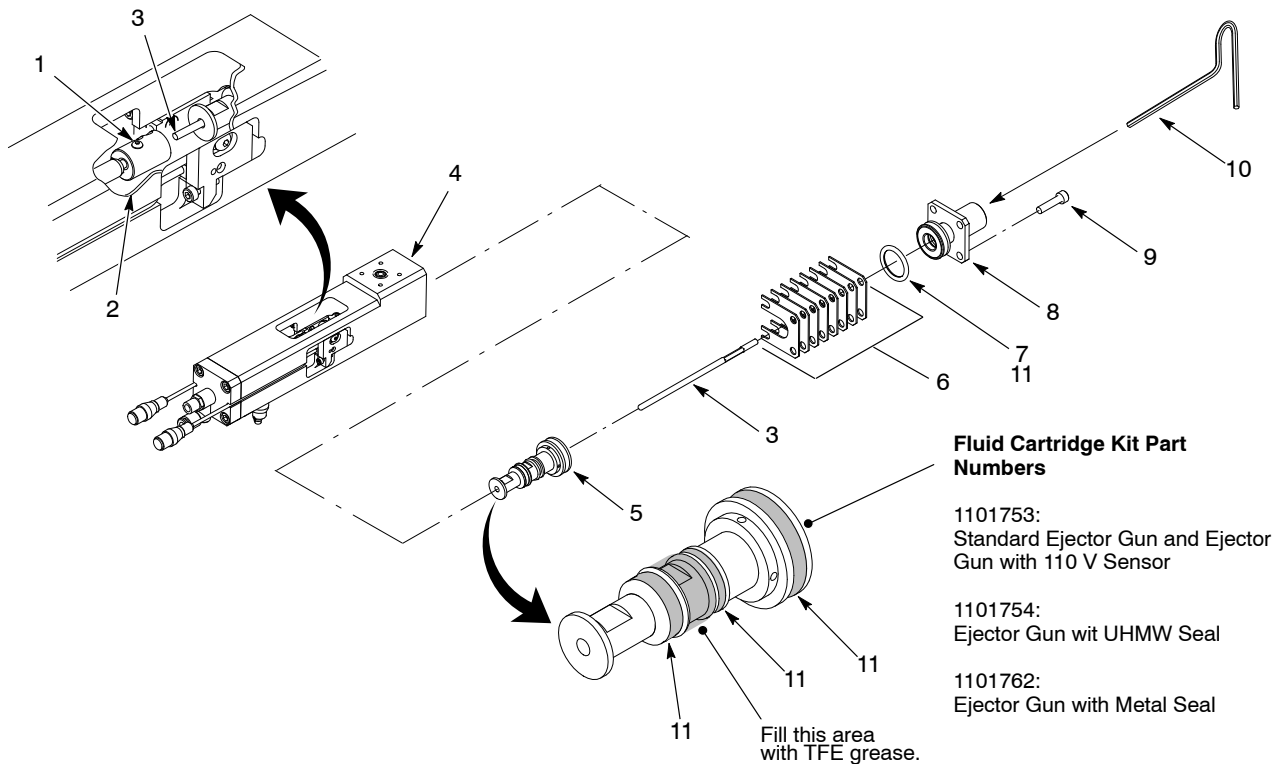


Figure 1 Fluid Cartridge Replacement