

# Rotary Disconnect Switch for Pro-Flo/Process Sentry Controllers

## 1. Installation

The following paragraphs provide installation procedures for the rotary disconnect switch.



**WARNING:** Allow only qualified personnel to perform the following tasks. Follow the safety instructions in this document and all other related documentation.



**WARNING:** Risk of electrical shock. Disconnect and lock out power to this unit. Failure to observe may result in personal injury, death, or equipment damage.

### *Remove the Existing Switch*

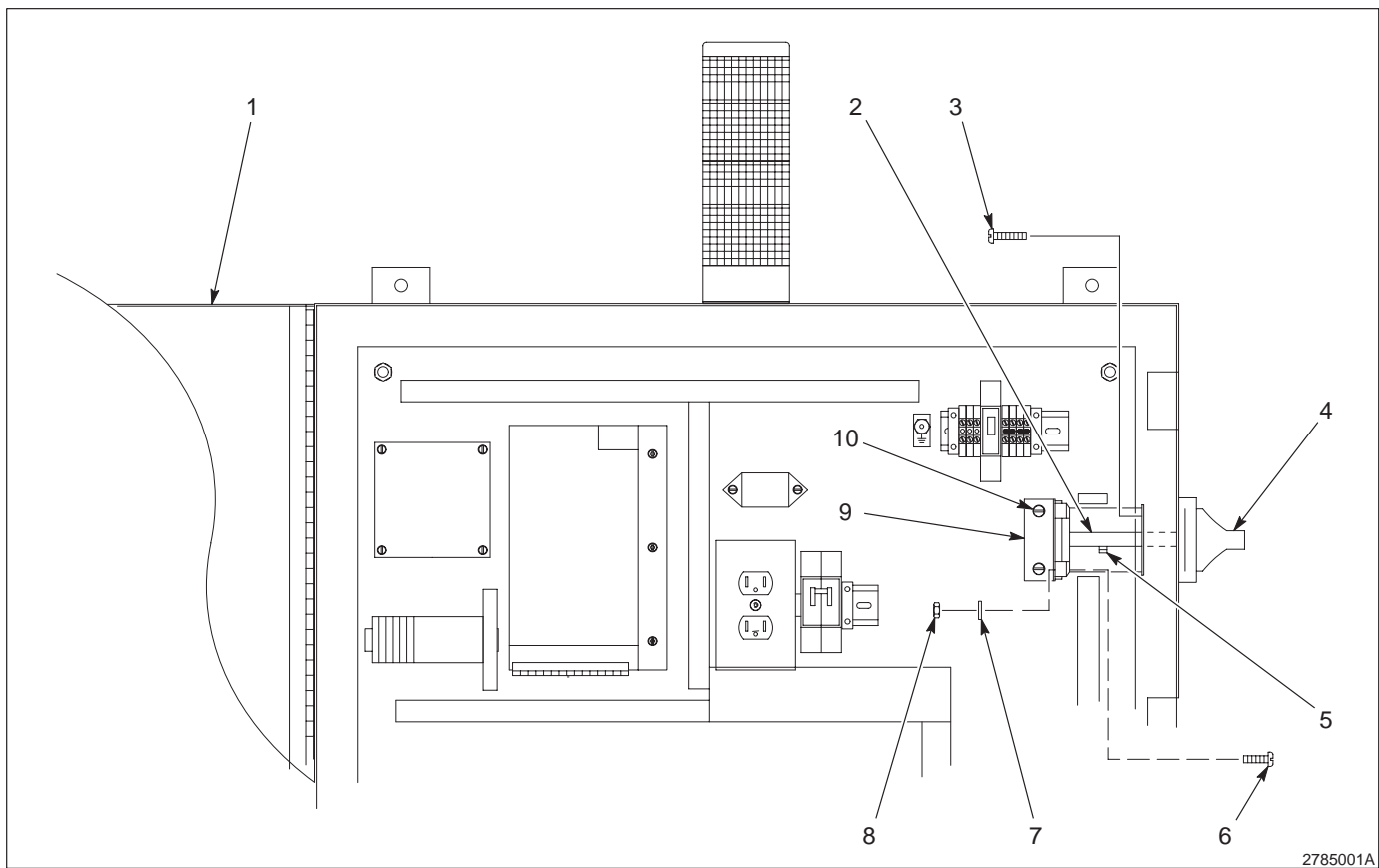
See Figure 1.

1. Open the enclosure door (1).
2. Remove the screws (10) securing the mounting bracket (9) to the enclosure.
3. Remove the screw (5) securing the switch handle (2) to the switch (4).
4. Tag and disconnect the wiring from the switch.

**Remove the Existing Switch**

(contd)

5. Remove the screws (3) securing the switch to the controller. Remove the switch from the controller.
6. Remove the nuts (8), lockwashers (6), and #8-32 screws (6) securing the switch to the mounting bracket. Retain the nuts, lockwashers, and #8-32 screws, for reassembly.



2785001A

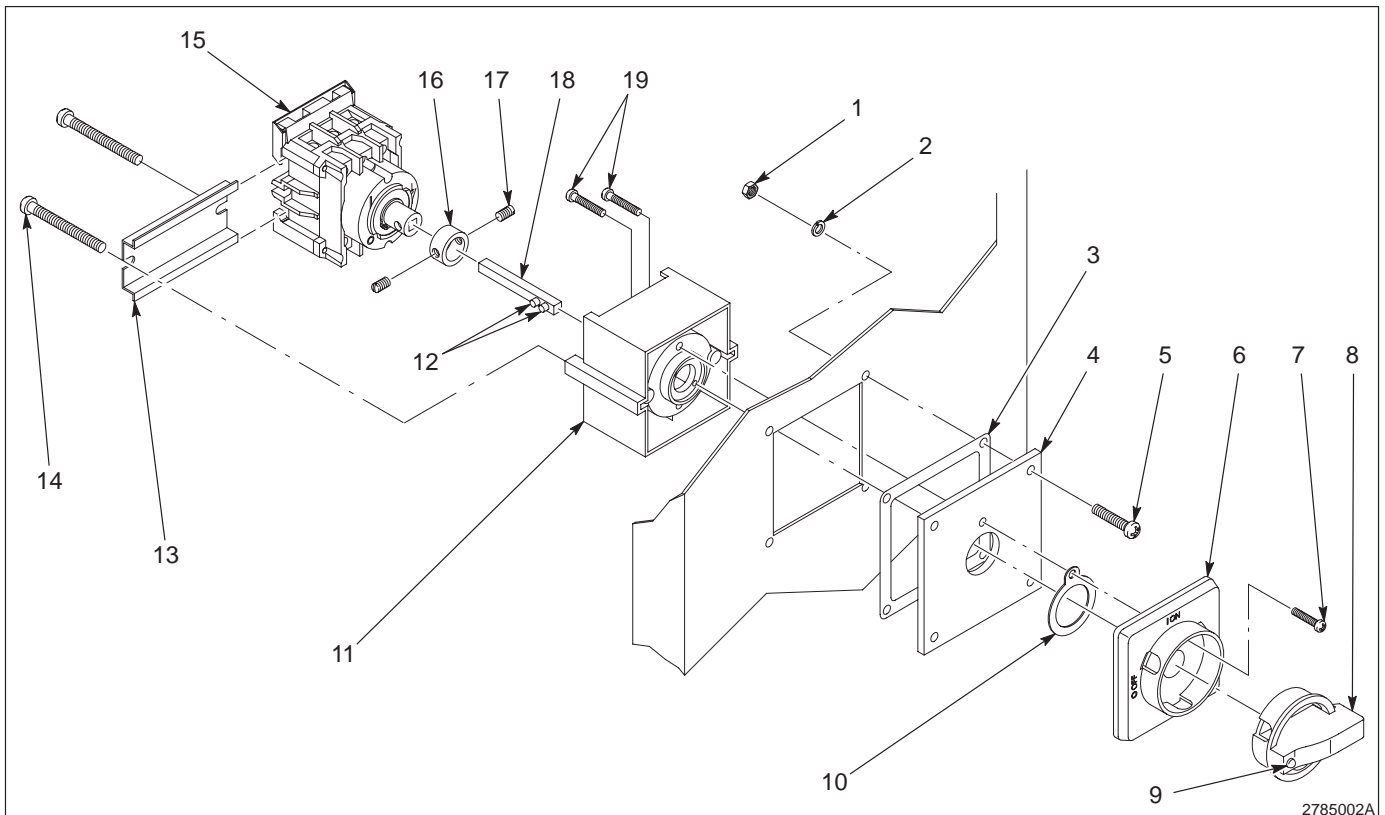
Fig. 1 Removing the Existing Switch

- |                   |                |                     |
|-------------------|----------------|---------------------|
| 1. Enclosure door | 5. Screw       | 9. Mounting bracket |
| 2. Switch handle  | 6. #8-32 screw | 10. Screw           |
| 3. Screw          | 7. Lockwasher  |                     |
| 4. Switch         | 8. Nut         |                     |

**Install the New Switch**

See Figure 2.

1. Install the gasket (3) and the adapter (4) to the controller. Use the screws (5), lockwashers (2), and nuts (1) that were saved from the removal procedure.
2. Remove the paper cover from the bezel gasket (10). Use the screw (7) to secure the bezel (6) to the controller.
3. Use the screws (19) to secure the switch adapter (11) to the bezel.
4. Align the knob (8) to the bezel as illustrated. Note the position of the knob pointer (9). Press on the knob to attach it to the bezel.



2785002A

Fig. 2 Installing the New Switch

- |               |                    |               |
|---------------|--------------------|---------------|
| 1. Nut        | 8. Knob            | 15. Switch    |
| 2. Lockwasher | 9. Knob pointer    | 16. Collar    |
| 3. Gasket     | 10. Bezel gasket   | 17. Set screw |
| 4. Adapter    | 11. Switch adapter | 18. Shaft     |
| 5. Screw      | 12. Pins           | 19. Screw     |
| 6. Bezel      | 13. DIN rail       |               |
| 7. Screw      | 14. Screw          |               |

**Install the New Switch** (contd)

5. Looking at the switch (15), position it so that the **I** faces toward the upper left. Insert the shaft (18), with the pins (12) pointing as illustrated, into the switch. Install the the collar (16) and tighten the set screws (17) securely.
6. Connect the wires to the switch. Remove the tags.
7. Attach the switch to the adapter.
8. Install the DIN rail (13) onto the back of the switch. Use the screws (14) to secure the switch.
9. [See Figure 1](#). Close the enclosure door (1).

**2. Parts**

[See Figure 2](#).

Item	Part	Description	Quantity	Note
—	100 8045	Service kit, rotary disconnect, replacement, 281714	—	
—	-----	• Switch, assembly, rotary disconnect	1	
3	-----	• Adapter plate, rotary disconnect	1	
4	-----	• Gasket, adapter plate	1	
1	-----	Nut, hex, machined, #8-32	4	A
2	-----	Washer, lock, internal, #8-32	4	A
5	-----	Screw, filister head, #8-32 x 0.500	4	A

NOTE A: This part is not included in the kit.