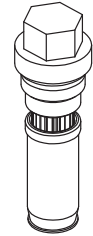


This instruction sheet provides the procedure for modifying a Universal™ applicator manifold to accept a conventional threaded filter (PN 1095822). Most Universal™ applicators can be modified; contact your Nordson representative to verify compatibility. The threaded filter manual section (Section 10) is included in this kit and should be inserted after the correct tab in your Universal™ applicator manual.

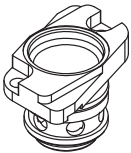
WARNING: Risk of personal injury or equipment damage! Refer to the safety information provided in the melter manual before servicing the melter. Failure to comply with the safety information provided can result in personal injury, including death.

Required Tools:

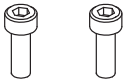
- M8 x 1.25 tap
- Hammer
- Torque wrench
- O-ring lubricant



UA threaded filter assembly



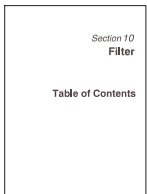
UA threaded filter adapter assembly (includes two O-rings)



M5 socket-head cap screws



Keyed inserts



Threaded filter manual section (insert behind Section 10 tab in Universal applicator manual)

Universal Applicator Threaded Filter Conversion

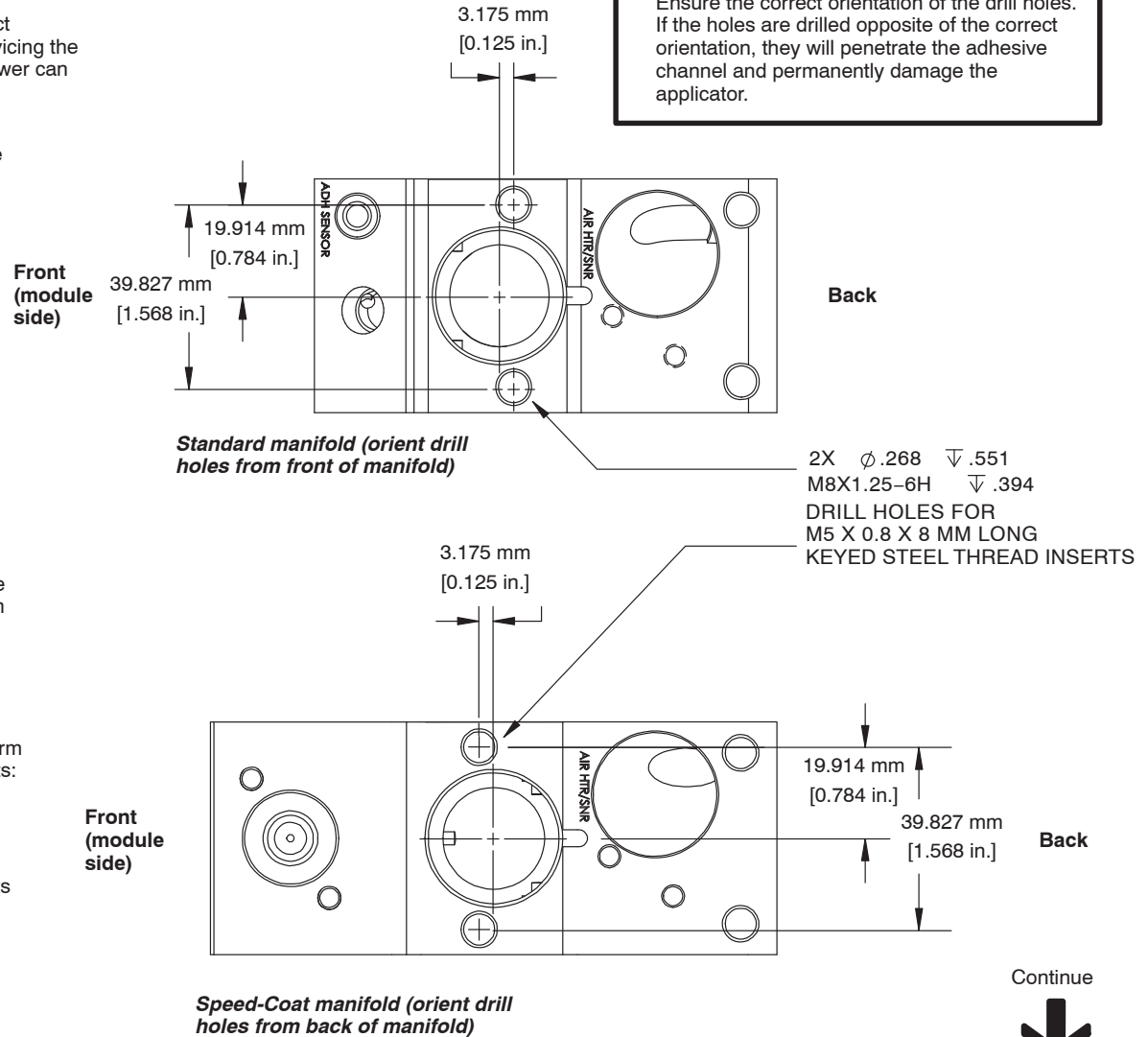
WARNING: Risk of electrocution! Disconnect electrical power to the applicator before servicing the applicator. Failure to properly disconnect power can result in personal injury, including death.

- 1.** Relieve system pressure and disable the applicator. Refer to the applicator manual as needed.
- 2.** Remove the filter. Refer to the filter removal procedure in the filter section (Section 10) of your manual as needed.
- 3.** If the two threaded inserts (item 1 on page 2) are present on the manifold, skip to step 7 on page 2. If they are not present, continue to the next step.

CAUTION: Risk of equipment damage. Take precautions as needed to prevent chips from entering the filter bore or other parts of the applicator during machining.

- 4.** If the two threaded inserts (item 1 on page 2) are not present on the manifold, perform the following actions to drill holes for the inserts:

- a.** Remove all components from the applicator to isolate the manifold.
- b.** Drill and tap holes for the threaded inserts in the applicator manifold as shown in the diagrams on this page.



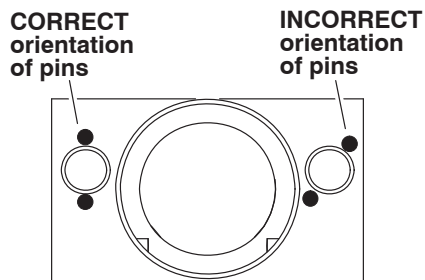
Continue



Universal Applicator Threaded Filter Conversion (contd)

5. Thread the keyed inserts (1), with the pins sticking out, into the manifold such that:

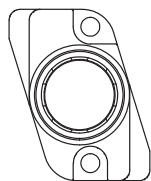
- the inserts are flush to the manifold surface, or no more than 0.75 mm (0.030 in.) below the manifold surface
- the metal pins on the inserts are oriented as shown in the illustration below



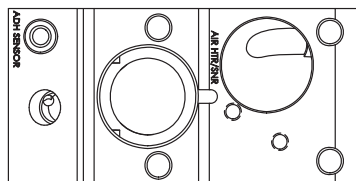
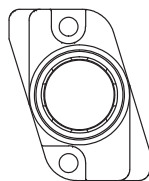
6. Carefully hammer the pins into the manifold until they are below the manifold surface. Use the punch as needed to ensure that the pins are below the surface.

7. Ensure that the O-rings are properly installed on the adapter (2) and lubricate the O-rings.

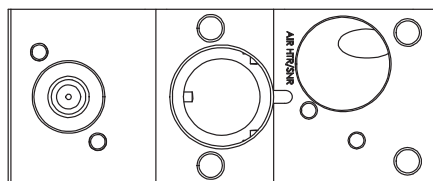
8. Orient the adapter (2) as shown below for a standard or Speed-Coat applicator manifold.



Rotate adapter
180 degrees



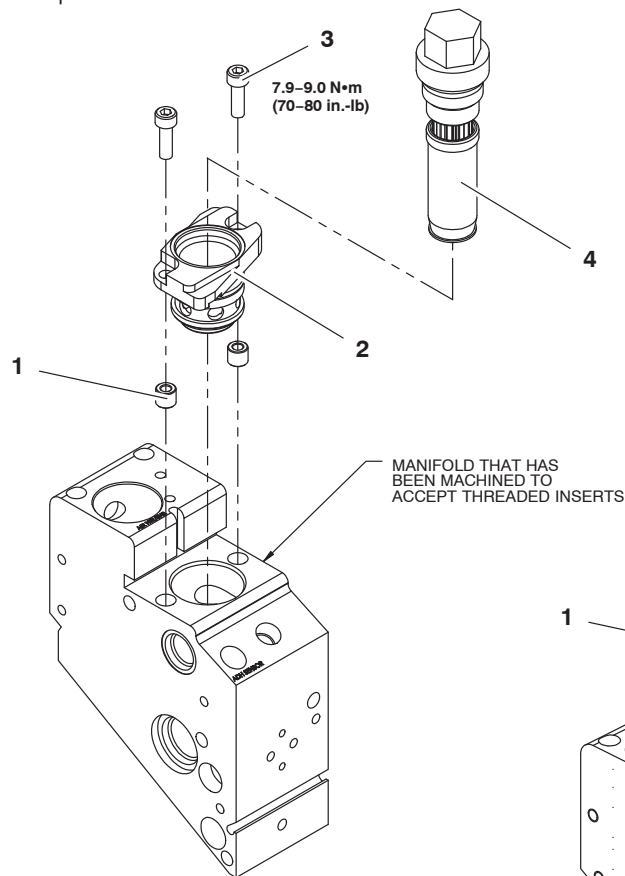
Standard manifold



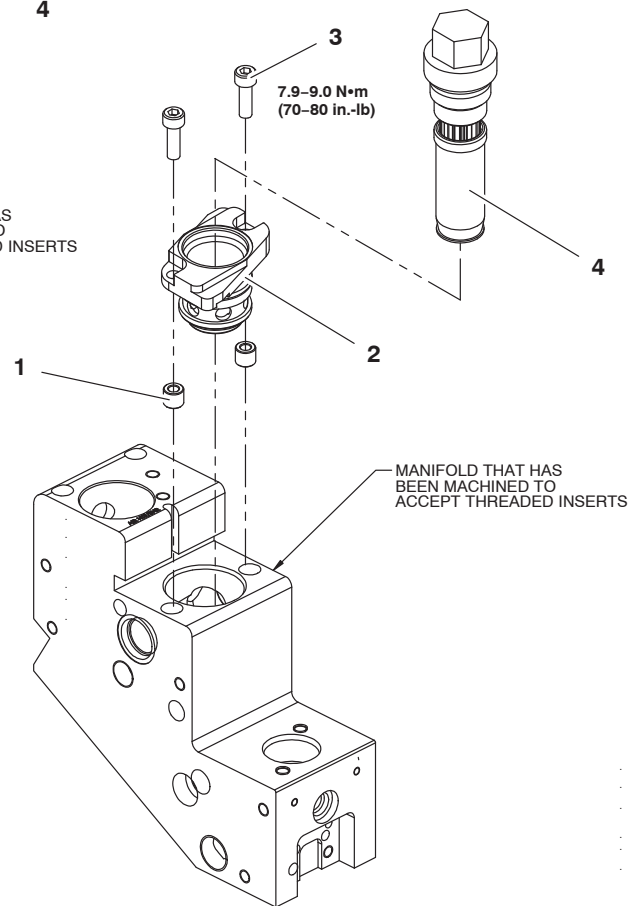
Speed-Coat manifold

9. Insert the adapter (2) into the bore in the manifold, slightly rotating it as needed to ensure that the screw holes are aligned and that a portion of the adapter is under the lip of the manifold.

10. Install the two M5 screws (3) and tighten them to 7.9–9.0 N•m (70–80 in.-lb).



Standard manifold



Speed-Coat manifold

11. Install the filter (4), complete the reassembly of the applicator, and restore the system to normal operation. Refer to the threaded filter manual section included with this kit to install the threaded filter.